

# Port Security Instruction 289/2024

## Active Port Security Zone

### Prelude

Attached is a map of the wharf showing which Landside and Waterside Port Security Zones are active for the visit of this vessel.

### Relevant Legislation Includes

- *Maritime Transport and Offshore Facilities Security Act 2003*  
*Part 6 – Maritime Security Zones*  
  
*Division 2 – Port Security Zones*  
  
*102 Establishing Port Security Zones*

### Instruction

In accordance with the Darwin Port Maritime Security Plan, the attached map shows the Port Security Zones that will be activated whilst the **Bulk Liquid** ship '**Cool Voyager**' is alongside at **Bladin Point**.

### Landside Restricted Zone (LRZ's)

The Active Landside Security Zone is **ILNGL01** and will be activated by **INPEX** 30 minutes prior to arrival on the **15<sup>th</sup> of December** until 30 minutes after the vessel departs. It is indicated in **Red**.

Maritime Security Identification Cards (MSIC's) must be worn and displayed by all persons inside the Active LSRZ. If non MSIC holders wish to enter the zone they must be escorted by an MSIC holder

### Waterside Restricted Zone (WRZ's)

The Active Waterside Security Zone is **ILNGW01** and is active from **09:00 the 15<sup>th</sup> of December** until 30 minutes after the vessel departs. It is indicated in **BLUE**.

Maritime Security Identification Cards (MSIC's) must be worn and displayed by all persons inside the Active WSRZ. If non MSIC holders wish to enter the zone they must be escorted by an MSIC holder.

Waterside Patrols will be undertaken by a Darwin Port vessel in conjunction with other operations.

## Safety

Appropriate PPE must be worn at all times.

**All non-essential vehicles must vacate the wharf deck by – N/A**

## Darwin Port Contact Details

Port Security Officer	Wayne Bodkin	8919 0886 or 0448 658 652
Harbour Control Officer	Duty Officer	8919 0821
Maritime Security Guard	Duty Officer	8919 0816 or 0401 110 320
Port Landside Officer	Duty Officer	0408 465 063

## DARWIN PORT

Issue Status: Version 3.0

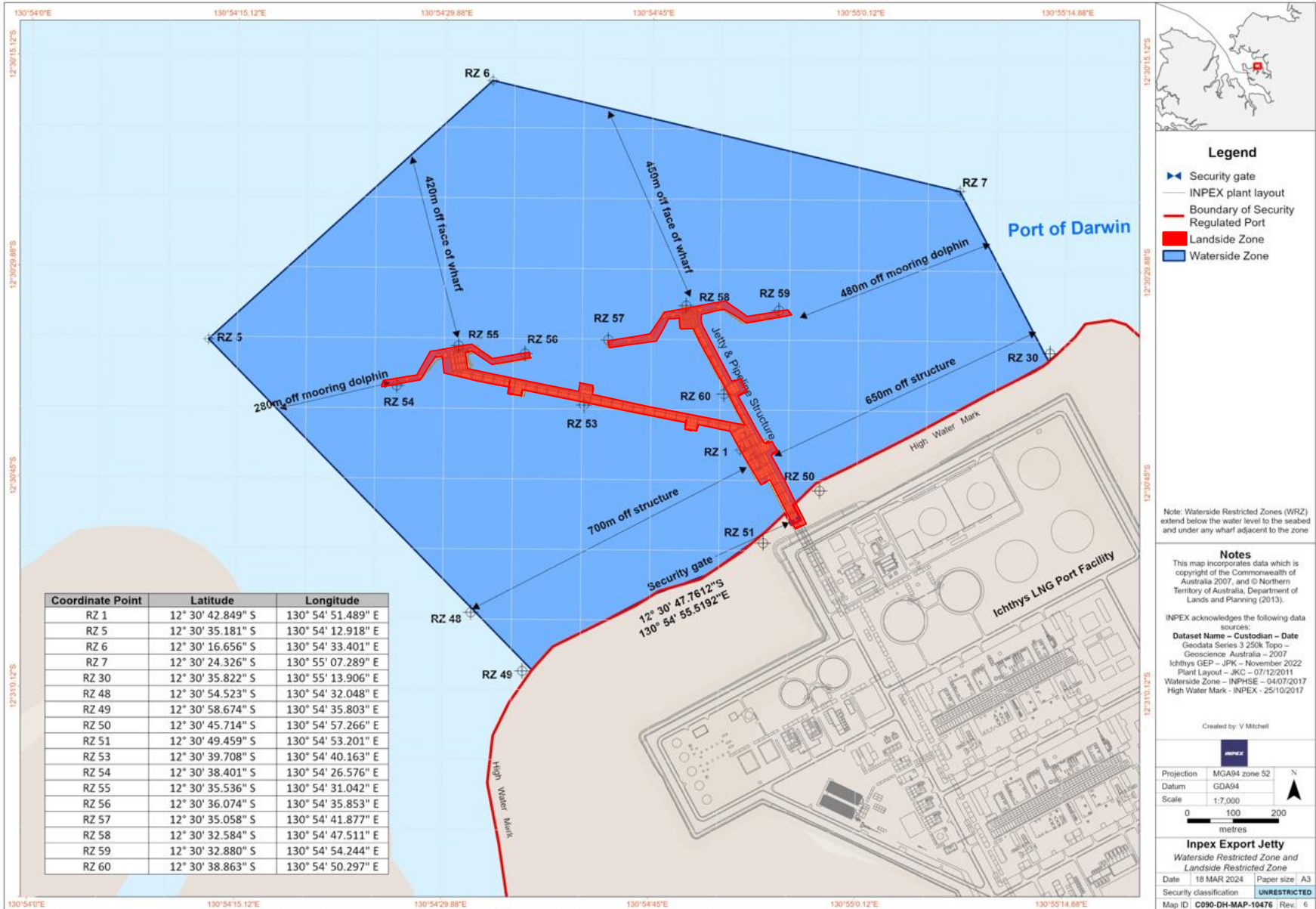
Issue Date: **13/12/2024.**

Authorised By: Wayne Bodkin (Senior Manager Landside Operations and Security)

Signature:

A handwritten signature in blue ink, appearing to be 'WB', written over a blue horizontal line.

Date: 13/12/2024



The information contained on this map is highly confidential and for information only, and must not be communicated to other persons without the prior written consent of the information owner. Any unauthorised use of such information may expose the user and the provider of that information to legal risk. While every effort has been made to ensure the accuracy and completeness of the information presented, no guarantee is given nor responsibility taken by INPEX for any errors or omissions. INPEX accepts no liability for any use of the said information or reliance placed on it.