

# SUSTAINABILITY REPORT CARD

# HIGHLIGHTS

## 2025



### PLANET



**SCOPE 1&2** Emissions accounting commenced

**99** Additional kwh

SolarPV system installed contributing to the ports renewable energy initiative



**0** Pest species established

### PROSPERITY

2,295 trading vessel visits



**↑31.07%**



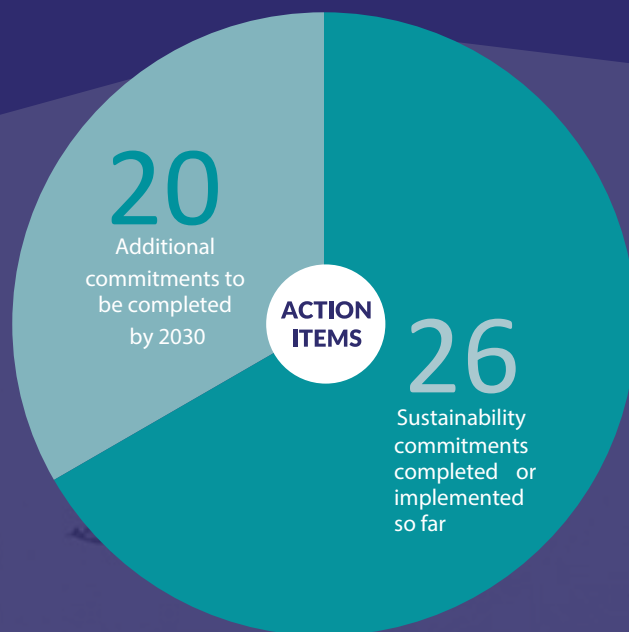
**↑23.51%**

1.93MT annual trade through the port

117 Cruise visits



**↑9.35%**



### PEOPLE



Sexual Harassment Prevention & Response Policy

**Launched**

Total Contributed via sponsorships

**\$316,200**

through both Darwin Port and Landbridge Infrastructure Australia

**23**

Trained mental health first aiders



**74%**

Employee Engagement Score

