

# Port Security Instruction 099/2026

## Active Port Security Zone

### Prelude

Attached is a map of the wharf showing which Landside and Waterside Port Security Zones are active for the visit of this vessel.

### Relevant Legislation Includes

- *Maritime Transport and Offshore Facilities Security Act 2003*  
*Part 6 – Maritime Security Zones*  
*Division 2 – Port Security Zones*  
*102 Establishing Port Security Zones*

### Instruction

In accordance with the Darwin Port Maritime Security Plan, the attached map shows the Port Security Zones that will be activated whilst the **Bulk Liquid** ship 'Yuan Yu He' is alongside at **Bladin Point**.

### Landside Restricted Zone (LRZ's)

The Active Landside Security Zone is **ILNGL01** and will be activated by **INPEX** 30 minutes prior to arrival on **Friday the 24<sup>th</sup> of April** until 30 minutes after the vessel departs. It is indicated in **Red**.

Maritime Security Identification Cards (MSIC's) must be worn and displayed by all persons inside the Active LSRZ. If non MSIC holders wish to enter the zone they must be escorted by an MSIC holder

### Waterside Restricted Zone (WRZ's)

The Active Waterside Security Zone is **ILNGW01** and is active from **18:00 Friday the 24<sup>th</sup> of April** until 30 minutes after the vessel departs. It is indicated in **BLUE**.

Maritime Security Identification Cards (MSIC's) must be worn and displayed by all persons inside the Active WSRZ. If non MSIC holders wish to enter the zone they must be escorted by an MSIC holder.

Waterside Patrols will be undertaken by a Darwin Port vessel in conjunction with other operations.


### Safety

Appropriate PPE must be worn at all times.

### Darwin Port Contact Details

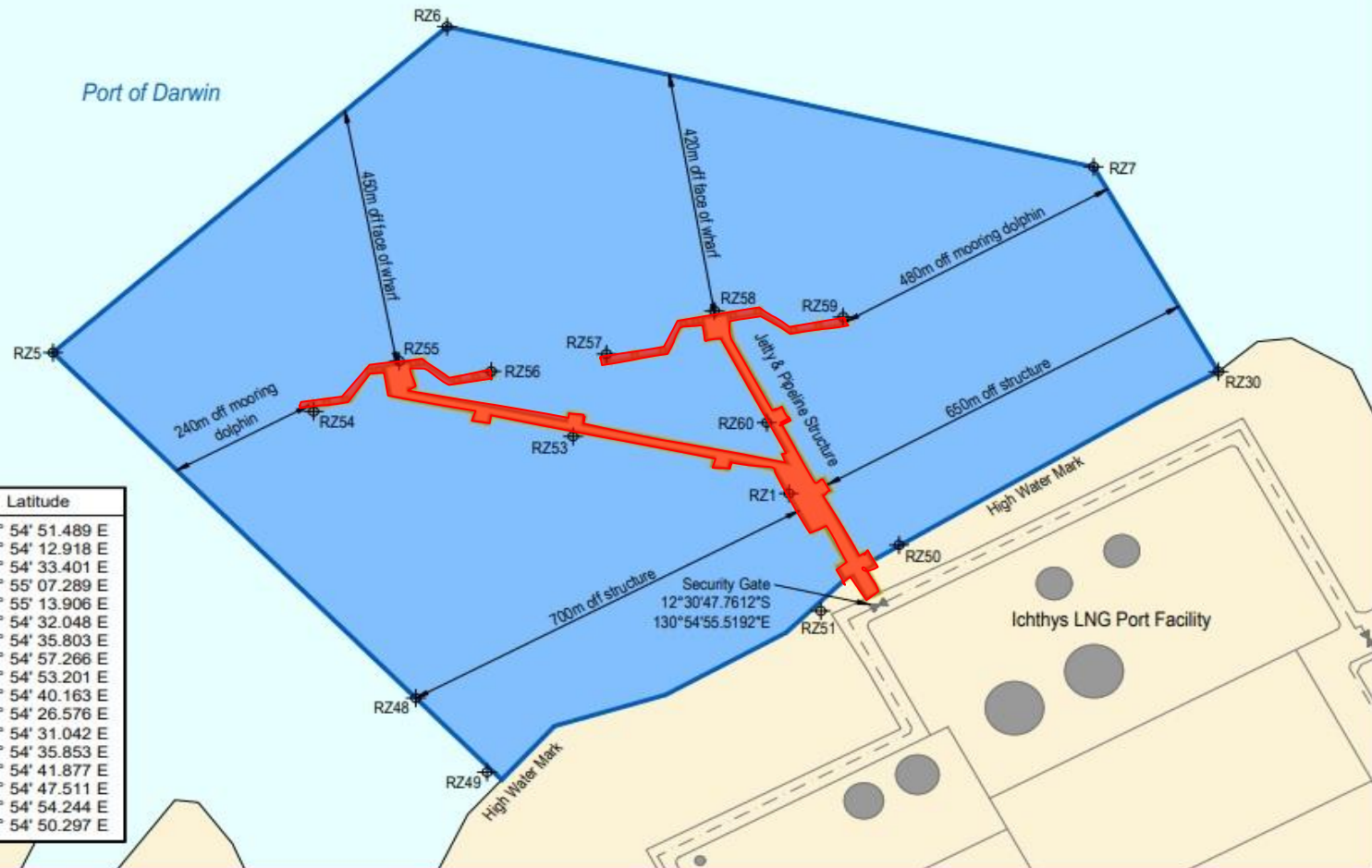
Port Security Officer	Wayne Bodkin	8919 0886 or 0448 658 652
Harbour Control Officer	Duty Officer	8919 0821
Maritime Security Guard	Duty Officer	8919 0816 or 0401 110 320
Port Logistics Officer	Duty Officer	0408 465 063

### DARWIN PORT

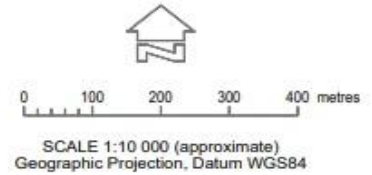
Issue Status: Version 3.0  
Issue Date: **24/04/2026**  
Authorised By: Wayne Bodkin (Senior Manager Landside Operations and Security)  
Signature:   
Date: 24/04/2026

Security gate  
 INPEX plant layout  
 Landside Zone  
 Waterside Zone

NOTE: Waterside Restricted Zones (WRZ) extend below the water level to the seabed and under any wharf adjacent to the zone.



Coordinate Point	Longitude	Latitude
RZ1	12° 30' 42.849 S	130° 54' 51.489 E
RZ5	12° 30' 35.181 S	130° 54' 12.918 E
RZ6	12° 30' 16.656 S	130° 54' 33.401 E
RZ7	12° 30' 24.326 S	130° 55' 07.289 E
RZ30	12° 30' 35.822 S	130° 55' 13.906 E
RZ48	12° 30' 54.523 S	130° 54' 32.048 E
RZ49	12° 30' 58.674 S	130° 54' 35.803 E
RZ50	12° 30' 45.714 S	130° 54' 57.266 E
RZ51	12° 30' 49.459 S	130° 54' 53.201 E
RZ53	12° 30' 39.708 S	130° 54' 40.163 E
RZ54	12° 30' 38.401 S	130° 54' 26.576 E
RZ55	12° 30' 35.536 S	130° 54' 31.042 E
RZ56	12° 30' 36.074 S	130° 54' 35.853 E
RZ57	12° 30' 35.058 S	130° 54' 41.877 E
RZ58	12° 30' 32.584 S	130° 54' 47.511 E
RZ59	12° 30' 32.880 S	130° 54' 54.244 E
RZ60	12° 30' 38.863 S	130° 54' 50.297 E



**PORT OF DARWIN - INPEX**  
 Waterside and Landside Zones  
 January 2025

This map shows the boundaries of the maritime security zones for the purposes of the *Maritime Transport & Offshore Facilities Security Act 2003*. This map is not intended for navigational purposes. Further information can be obtained from the Office of Transport Security (OTS), GPO Box 594, Department of Infrastructure, Transport, Regional Development & Local Government, Canberra ACT 2601, or phone the OTS Coordination Centre on 1300 307 288.

Created by:

EJA Ref: 6190 2025-01-17 INPEX WRZ-LR2 (V1).dwg

*This map is intended to help clarify the related Maritime Security Zone Boundary description. In the event of inconsistency between the written description and the map, the written description prevails.*