

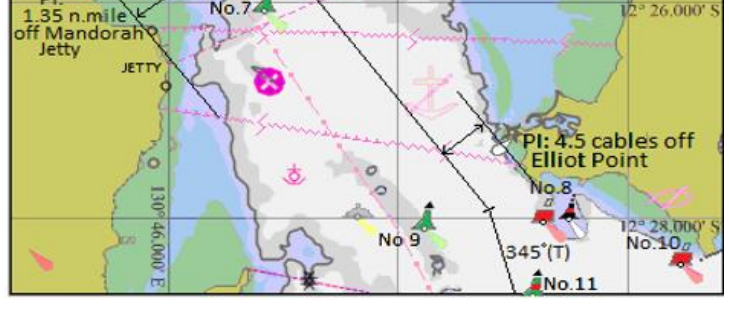
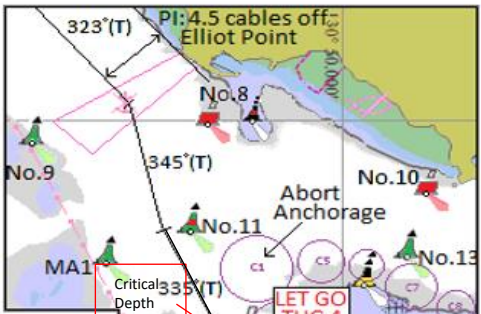
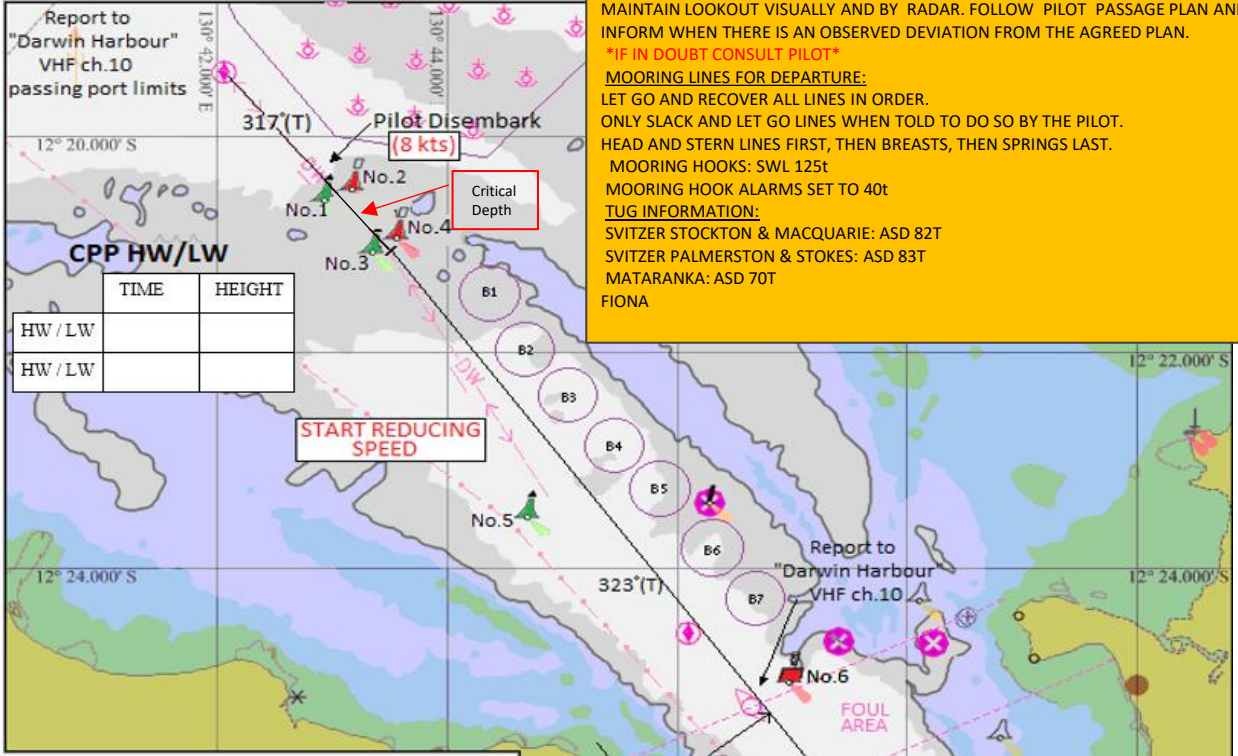


Partnering in growth, connecting people and supporting potential

**BRIDGE TEAM:**  
 MAINTAIN LOOKOUT VISUALLY AND BY RADAR. FOLLOW PILOT PASSAGE PLAN AND INFORM WHEN THERE IS AN OBSERVED DEVIATION FROM THE AGREED PLAN.  
**\*IF IN DOUBT CONSULT PILOT\***

**MOORING LINES FOR DEPARTURE:**  
 LET GO AND RECOVER ALL LINES IN ORDER.  
 ONLY SLACK AND LET GO LINES WHEN TOLD TO DO SO BY THE PILOT.  
 HEAD AND STERN LINES FIRST, THEN BREASTS, THEN SPRINGS LAST.  
 MOORING HOOKS: SWL 125t  
 MOORING HOOK ALARMS SET TO 40t

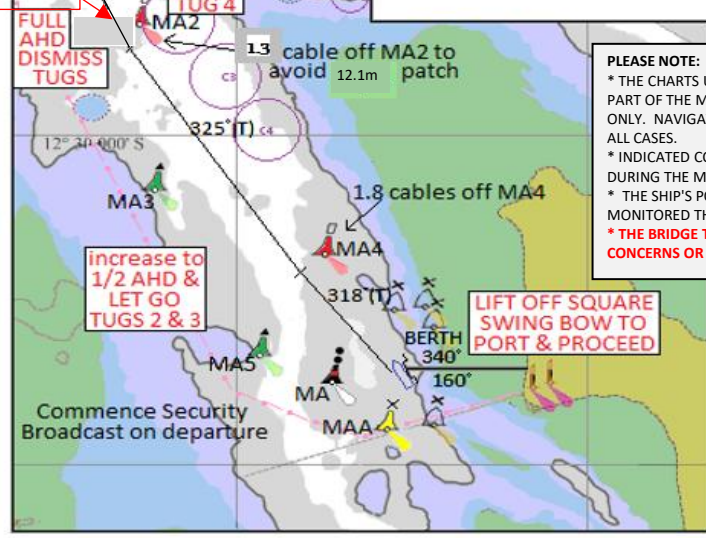
**TUG INFORMATION:**  
 SVITZER STOCKTON & MACQUARIE: ASD 82T  
 SVITZER PALMERSTON & STOKES: ASD 83T  
 MATARANKA: ASD 70T  
 FIONA



**BERTHING LIMITS**  
 Wind: 20kts (unless SE'ly then 25kts)  
 Tide: 3kts

**DEPTHS:**  
 As per latest NTM: Declared Depths

**PLEASE NOTE:**  
 \* THE CHARTS USED ON THIS PASSAGE PLAN ARE NOT TO SCALE. THESE CHARTS FORM PART OF THE MASTER/PILOT EXCHANGE AND ARE FOR INFORMATION ONLY. NAVIGATIONAL CHARTS AND/OR APPROVED ECDIS SHOULD BE REFERRED TO IN ALL CASES.  
 \* INDICATED COURSES ARE A GUIDELINE ONLY. VESSEL'S ROUTE IS TO BE DISCUSSED DURING THE MASTER/PILOT EXCHANGE AND AGREED TO BY THE MASTER.  
 \* THE SHIP'S POSITION, THE VESSEL'S CONDITION AND HARBOUR TRAFFIC ARE TO BE MONITORED THROUGHOUT THE PASSAGE BY THE BRIDGE TEAM.  
**\* THE BRIDGE TEAM MUST IMMEDIATELY MAKE THE PILOT AWARE OF ANY CONCERNS OR ANYTHING NOT UNDERSTOOD**



Partnering in growth, connecting people and supporting potential

**DARWIN PILOT PASSAGE PLAN**

Route: DLNG to Outer Pilot Boarding Ground  
OUTWARD BOUND  
TOTAL DIST 14.8nm

Waypoint Name	LAT	LONG	Course x Distance to next Waypoint	Total Distance to Waypoint	Comments
DLNG Berth	12° 31.434' S	130° 50.913' E	318° x 0.8nm		
MA4 Buoy	12° 30.819' S	130° 50.346' E	325° x 1.6nm	0.8nm	Pass 0.18nm off MA4 Buoy
MA2 Buoy	12° 29.483' S	130° 49.388' E	335° x 1.0nm	2.4nm	Pass 0.13nm off MA2 Buoy
No.11 Buoy	12° 28.585' S	130° 48.959' E	345° x 0.7nm	3.4nm	Pass 0.10nm off No.11 Buoy
Elliott Point	12° 27.943' S	130° 48.783' E	323° x 8.6nm	4.1nm	Pass 0.45nm off Elliott Point
3 & 4 Buoys	12° 21.108' S	130° 43.518' E	317° x 2.1nm	12.7nm	Pass 1.35nm off Mandorah Jetty
OPBG	12° 19.561' S	130° 42.042' E		14.8nm	