

Partnering in growth, connecting people and supporting potential

NAME OF VESSEL: _____ DATE: _____
 POB TIME: _____ GT: _____ DRAUGHT F: _____
 BERTH : ILPG/ILNG LOA: _____ DRAUGHT A: _____

PORTSIDE ALONGSIDE – Refer to latest NTM for Declared Depths

DRAUGHTS & UKC			TIDE HEIGHTS			DARWIN HW/LW		
	DWR	Swing Basin/Berth	Tide @			TIME	HEIGHT	
Min. Depth			Tide @		CPP	HW/LW		
Tide @ -----			Tide @			HW/LW		
Total Depth			Tide @			HW/LW		
Max Draught			Tide @		DARWIN HARBOUR			
Static UKC			Tide @					
Min Regd UKC	2.0 m	1.5 m	Tide @					
Comply UKC	Yes / No	Yes / No						

Mooring toolbox meeting held

Gyro Compass Error: _____ High/Low

Hand Steering tested

Pilot Card completed

Principles of BRM discussed

NFU Steering tested

Anchors Ready

Bow Thruster: Y N HP/KW

Main Engine tested ahead/astern

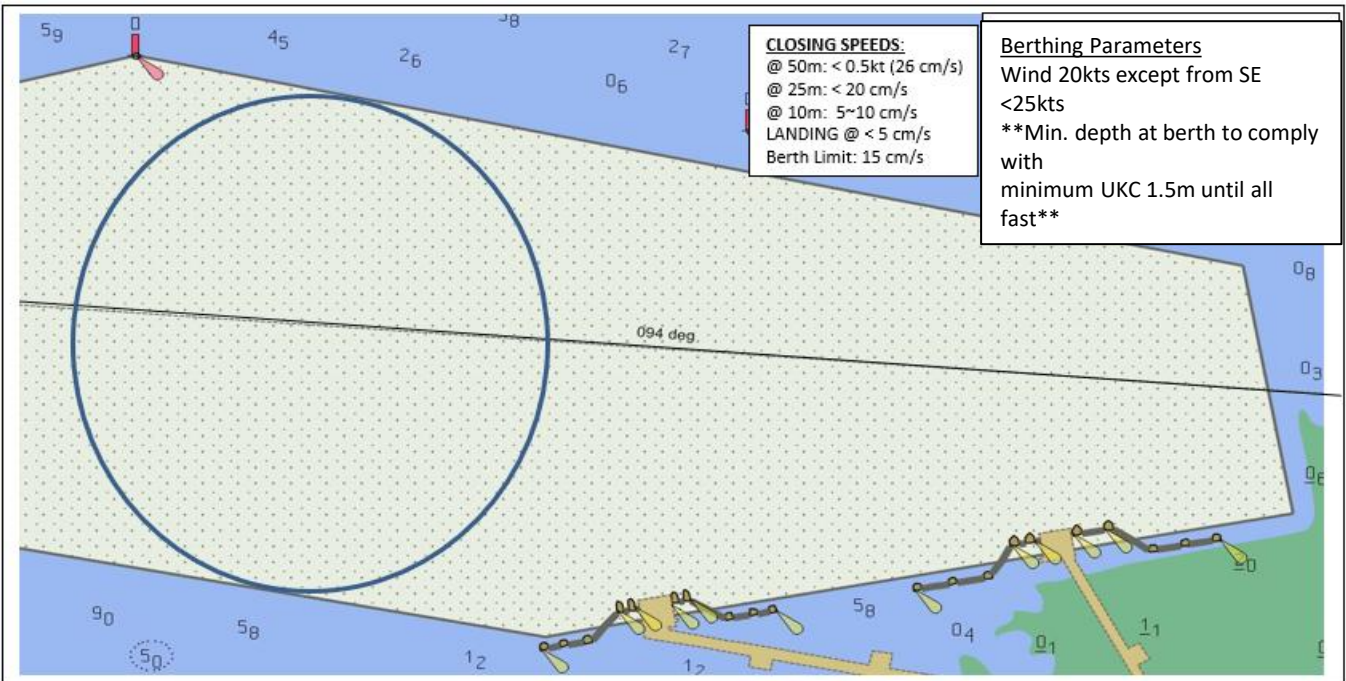
ANY condition or defect that the pilot should be made aware of Y N

VHF CHANNELS

Darwin Harbour

ILNG Berth & Tugs

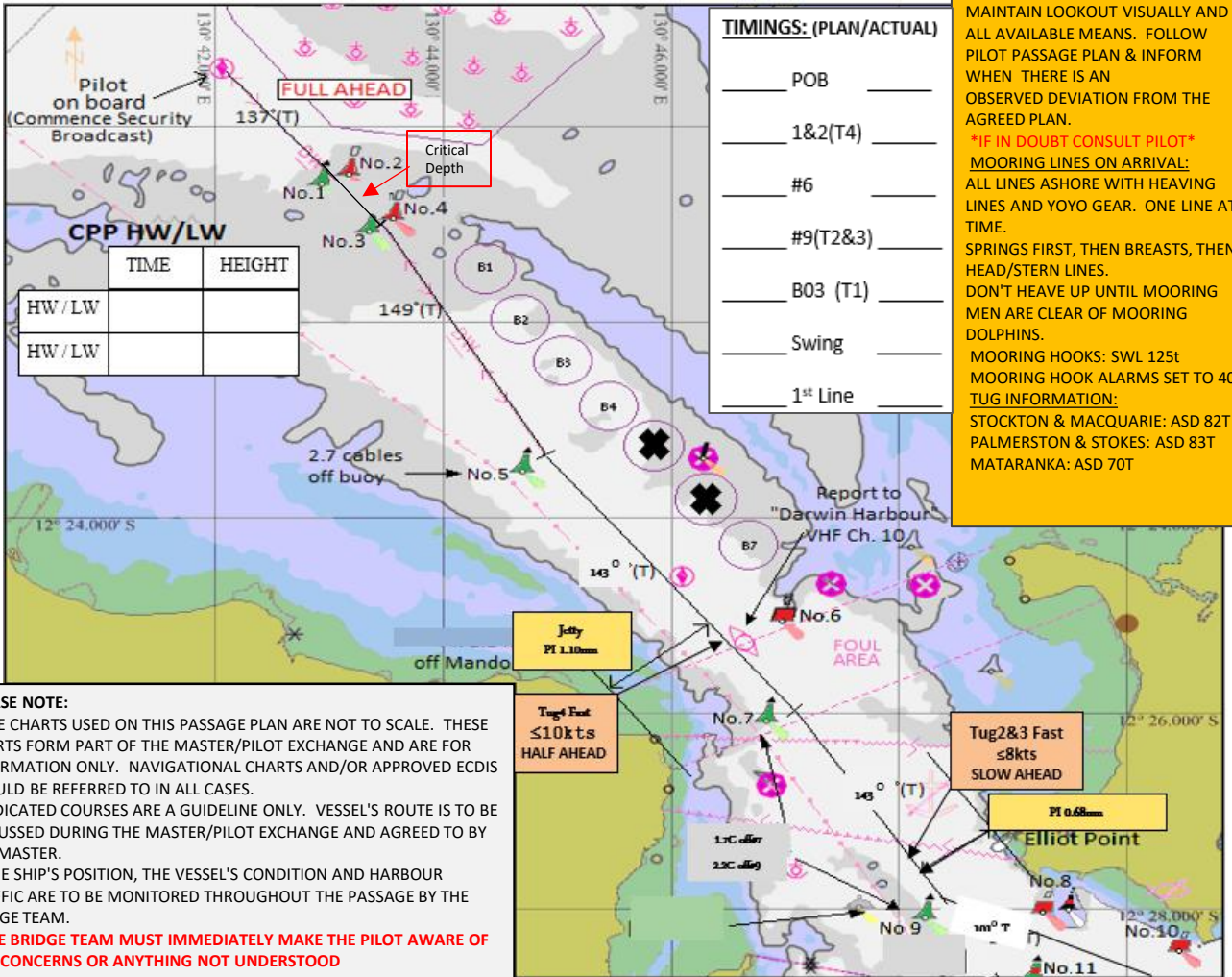
ILPG Berth & Tugs



THE PRINCIPLES OF BRIDGE RESOURCE MANAGEMENT MUST BE ADHERED TO AT ALL TIMES

MASTER: _____ SIGNATURE: _____
 PILOT: _____ SIGNATURE: _____

Partnering in growth, connecting people and supporting potential

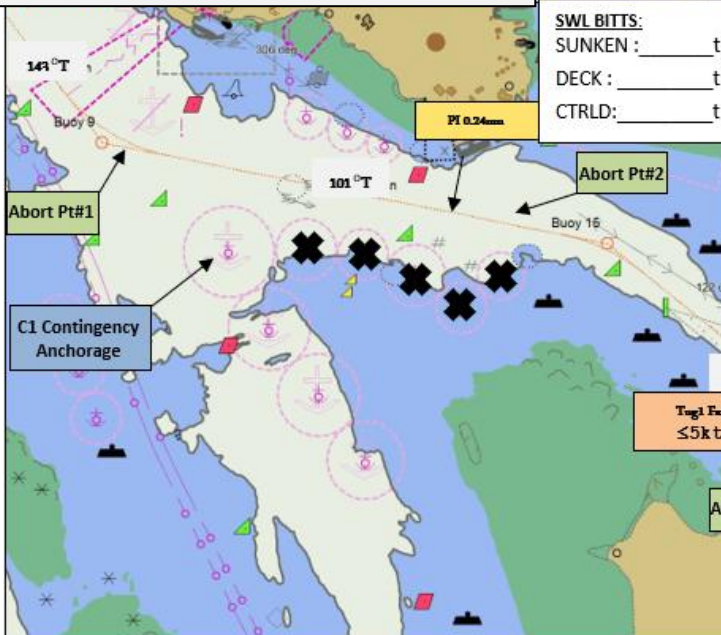
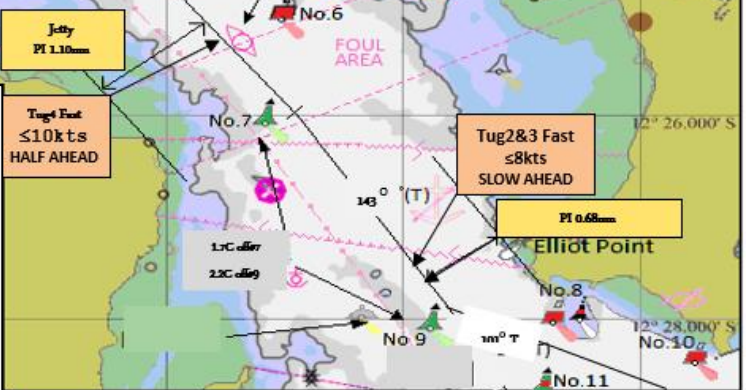


TIMINGS: (PLAN/ACTUAL)

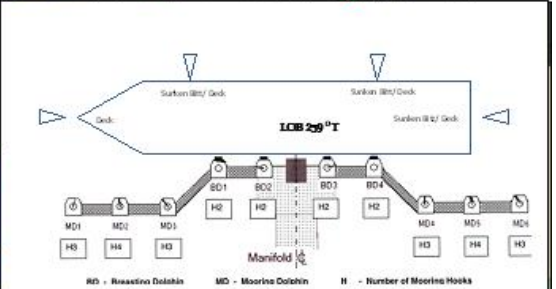
_____	POB	_____
_____	1&2(T4)	_____
_____	#6	_____
_____	#9(T2&3)	_____
_____	B03 (T1)	_____
_____	Swing	_____
_____	1 st Line	_____

BRIDGE TEAM:
MAINTAIN LOOKOUT VISUALLY AND BY ALL AVAILABLE MEANS. FOLLOW PILOT PASSAGE PLAN & INFORM WHEN THERE IS AN OBSERVED DEVIATION FROM THE AGREED PLAN.
IF IN DOUBT CONSULT PILOT
MOORING LINES ON ARRIVAL:
ALL LINES ASHORE WITH HEAVING LINES AND YOYO GEAR. ONE LINE AT A TIME.
SPRINGS FIRST, THEN BREASTS, THEN HEAD/STERN LINES.
DON'T HEAVE UP UNTIL MOORING MEN ARE CLEAR OF MOORING DOLPHINS.
MOORING HOOKS: SWL 125t
MOORING HOOK ALARMS SET TO 40t
TUG INFORMATION:
STOCKTON & MACQUARIE: ASD 82T
PALMERSTON & STOKES: ASD 83T
MATARANKA: ASD 70T

PLEASE NOTE:
* THE CHARTS USED ON THIS PASSAGE PLAN ARE NOT TO SCALE. THESE CHARTS FORM PART OF THE MASTER/PILOT EXCHANGE AND ARE FOR INFORMATION ONLY. NAVIGATIONAL CHARTS AND/OR APPROVED ECDIS SHOULD BE REFERRED TO IN ALL CASES.
* INDICATED COURSES ARE A GUIDELINE ONLY. VESSEL'S ROUTE IS TO BE DISCUSSED DURING THE MASTER/PILOT EXCHANGE AND AGREED TO BY THE MASTER.
* THE SHIP'S POSITION, THE VESSEL'S CONDITION AND HARBOUR TRAFFIC ARE TO BE MONITORED THROUGHOUT THE PASSAGE BY THE BRIDGE TEAM.
*** THE BRIDGE TEAM MUST IMMEDIATELY MAKE THE PILOT AWARE OF ANY CONCERNS OR ANYTHING NOT UNDERSTOOD**



SWL BITTS:
SUNKEN : _____ t
DECK : _____ t
CTRLD: _____ t



DARWIN PILOT PASSAGE PLAN (ILNG BERTH INWARD)
Route: Outer Pilot Boarding Ground to INPEX ILNG (Inward) / Total distance 17.5nm

Waypoint Name	Latitude	Longitude	Course & Distance	DTG	Comment
1 OPBG	12° 19.561' S	130° 42.042' E	137° x 2.11nm	17.47nm	Speed 12kts
2 Buoys 3&4	12° 21.108' S	130° 43.518' E	149° x 2.64nm	15.36 nm	Speed 12kts
3 Buoy 5	12° 23.377' S	130° 44.908' E	142° x 1.57nm	12.72 nm	Speed 12kts
4 IPBG / Buoy 6 TUGS 1,2,3,4 rendezvous	12° 24.616' S	130° 45.907' E	143° x 4.59nm	11.15 nm	Speed 10kts PI 143° x 1.11' off Mandorah Jetty PI 143° x 0.68' off Emery Pt
5 Buoy 9	12° 28.279' S	130° 48.752' E	101° x 2.73nm	6.56 nm	Speed 8 kts Pass 0.6nm off Elliott Point PI 101° x 0.24' off FHW Dolphin
6 Buoy 15	12° 28.816' S	130° 51.486' E	129° x 2.27nm	3.83 nm	Speed 6 kts PI 129° x 0.37' off EAW
7 Buoy B05	12° 30.246' S	130° 53.295' E	108° x 0.41nm	1.56 nm	Speed 4kts PI 094° x 0.54nm off Old Man Rock
8 Buoy B04 (Turn)	12° 30.376' S	130° 53.694' E	094° x 0.46nm	1.15 nm	Exit turn just south of 094° leads
9 Buoy B06 – Swing Basin 700m width	12° 30.410' S	130° 54.160' E	094° x 0.62nm	0.69 nm	Speed astern < 2kts / Swing and come astern on PI 094° x 0.161' off ILPG berth
10 130m off ILNG berth	12° 30.454' S	130° 54.791' E	180° x 0.07nm	0.07 nm	Speed <0.5kt reducing to Doppler limits
11 Alongside ILNG berth	12° 30.532' S	130° 54.859' E	//	0 nm	Berth heading 079° /259° Port side to (head out) berthing

DARWIN PILOT PASSAGE PLAN (ILPG BERTH INWARD)
Route: Outer Pilot Boarding Ground to INPEX ILPG (Inward) / Total distance 17.2nm

Waypoint Name	Latitude	Longitude	Course & Distance	DTG	Comment
1 OPBG	12° 19.561' S	130° 42.042' E	137° x 2.11nm	17.2nm	Speed 12kts
2 Buoys 3&4	12° 21.108' S	130° 43.518' E	149° x 2.64nm	15.36 nm	Speed 12kts
3 Buoy 5	12° 23.377' S	130° 44.908' E	142° x 1.57nm	12.72 nm	Speed 12kts
4 IPBG / Buoy 6 TUGS 1,2,3 rendezvous	12° 24.616' S	130° 45.907' E	143° x 4.59nm	11.15 nm	Speed 10kts PI 143° x 1.11' off Mandorah Jetty PI 143° x 0.68' off Emery Pt
5 Buoy 9	12° 28.279' S	130° 48.752' E	101° x 2.73nm	6.56 nm	Speed 8 kts Pass 0.6nm off Elliott Point PI 101° x 0.24' off FHW Dolphin
6 Buoy 15	12° 28.816' S	130° 51.486' E	129° x 2.27nm	3.83 nm	Speed 6 kts PI 129° x 0.37' off EAW
7 Buoy B05	12° 30.246' S	130° 53.295' E	108° x 0.41nm	1.56 nm	Speed 4kts PI 094° x 0.54nm off Old Man Rock
8 Buoy B04 (Turn)	12° 30.376' S	130° 53.694' E	094° x 0.46nm	1.15 nm	Exit turn just south of 094° leads
9 Buoy B06 – Swing Basin 700m width	12° 30.410' S	130° 54.160' E	107° x 0.35nm	0.35 nm	Speed astern < 2kts / Swing and come astern on PI 094° x 0.161' off ILPG berth
10 130m off ILPG berth	12° 30.510' S	130° 54.501' E	169° x 0.07nm	0.07 nm	Speed <0.5kt reducing to Doppler speed limits displayed on passplan
11 Alongside ILPG berth	12° 30.579' S	130° 54.515' E	//	0 nm	Berth heading 079° /259° Port side to (head out) berthing