

# ENVIRONMENTAL MANAGEMENT PLAN

Version 2.0 May 2016





## TABLE OF CONTENTS

<b>1.</b>	<b>INTRODUCTION</b>	<b>1</b>
1.1	Our Organisation	1
1.2	Scope and Intent of the EMP	1
1.3	DP EMP Nominated Representative	2
1.4	Structure of this Document	2
<b>2.</b>	<b>ENVIRONMENTAL MANAGEMENT FRAMEWORK</b>	<b>4</b>
2.1	Overview of the Environmental Management System	4
2.2	Legislative and Regulatory Framework	8
2.3	Environmental Guidelines	9
2.3	Relevant Documents to this EMP	10
2.3	Roles and Responsibilities	11
2.3.1	Darwin Port Operations Pty Ltd	11
2.3.2	Port Users	13
2.3.3	Health, Safety, Environment and Security Steering Committee	13
2.3.4	Port User Group	14
2.3.5	Commonwealth Government Agencies	14
2.3.6	Northern Territory Government Agencies	14
<b>3.</b>	<b>DESCRIPTION OF THE PORT OF DARWIN</b>	<b>16</b>
3.1	Overview	16
3.2	Land Tenure and Zoning	20
3.3	Existing Environment	20
3.3.1	Climate	20
3.3.2	Cultural Heritage	20
3.3.3	Soils and Landform	21
3.3.4	Surface Water	21
3.3.7	Flora and Fauna	22
<b>4.</b>	<b>RISK MANAGEMENT APPROACH</b>	<b>24</b>
4.1	Identification of Issues	24
4.2	Assessment of Risk	25
4.3	Development of Objectives and Targets	27
<b>5.</b>	<b>ENVIRONMENTAL MANAGEMENT AND IMPLEMENTATION</b>	<b>28</b>
5.1	Overview	28
5.2	Systems	28
5.2.1	Objective	28
5.2.2	Management Strategies	28
5.3	Regulatory Compliance	29
5.3.1	Objective	29
5.3.2	Management Strategies	29
5.4	Planning	29
5.4.1	Objective	29
5.4.2	Management Strategies	29

5.5	Communication	30
5.5.1	Objective	30
5.5.2	Management Strategies	30
5.6	Sustainability (Energy, Greenhouse Gases and Resources)	30
5.6.1	Objective	30
5.6.2	Management Strategies	30
5.7	Air Quality	30
5.7.1	Objectives	30
5.7.2	Management Strategies	30
5.8	Land and Soils	31
5.8.1	Objectives	31
5.8.2	Management Strategies	31
5.9	Water and Marine Sediments	31
5.9.1	Objectives	31
5.9.2	Management Strategies	31
5.10	Flora and Fauna	33
5.10.1	Objectives	33
5.10.2	Management Strategies	33
5.11	Hydrocarbons and Hazardous Materials	33
5.11.1	Objectives	33
5.11.2	Management Strategies	33
5.12	Waste Management	34
5.12.1	Objective	34
5.12.2	Management Strategies	34
5.13	Cargo Handling	35
5.13.1	Objective	35
5.13.2	Management Strategies	35
5.14	Bunkering and other Liquid Transfers	35
5.14.1	Objective	35
5.14.2	Management Strategies	35
5.15	Dredging	35
5.15.1	Objective	35
5.15.2	Management Strategies	36
<b>6.</b>	<b>MANAGING RESIDUAL RISK</b>	<b>37</b>
6.1	Emergency Preparedness, Response and Recovery	37
6.2	Environmental Incident Reporting	37
6.3	Incident Investigation	38
6.4	Environmental Incident Register	38
6.5	Corrective Action for Non-Conformances	38
<b>7.</b>	<b>REVIEW AND REVISION</b>	<b>40</b>
7.1	Darwin Port Environmental Monitoring	40
7.2	Port User Environmental Monitoring	40
7.3	Auditing	40
7.4	EMP Certification	40
7.5	Recording	40



<b>8. DOCUMENT CONTROL AND AVAILABILITY</b>	<b>42</b>
8.1 Document Control	42
8.2 Publication and Availability	42
<b>9. ABBREVIATIONS AND GLOSSARY</b>	<b>43</b>
Units and Symbols	43
Abbreviations	43
Words	44
<b>10. REFERENCES AND BIBLIOGRAPHY</b>	<b>47</b>

### **Figures**

2.1 Environmental management system structure	6
2.2 Environmental policy	7
2.3 Darwin Port organisational structure	12
3.1 Port of Darwin – Australia's Northern Gateway to Asia	16
3.2 Port of Darwin Boundaries	17
3.3 Port of Darwin Infrastructure	18
3.4 East Arm Wharf Precinct	19
3.5 Fort Hill Wharf Precinct	19
3.6 Shipwrecks and significant sites (selected sites)	21

### **Tables**

2.1 Relevant documents to this EMP	10
2.2 Current lessees / occupiers	13
3.1 Port of Darwin infrastructure	17
4.1 Risk ranking matrix	25
4.2 Consequence assessment table	26

### **Attachments**

A Licence to occupy – typical environmental clauses	
B DP EMS Legal Register	

## VERSION HISTORY

### Document Revision Record

The EMP is a live document that is reviewed and updated regularly to reflect any significant changes in DP's environmental risks, impacts, management strategies or legislative requirements. This following table tracks the review and revision status of the document.

No	Date	Description	Name
1.0	April 2016	Draft Document	DP Environmental Manager David McMaster
1.1	May 2016	Final Draft Document	GM Corporate Services Melissa Reiter
1.2	May 2016	Final Draft Document	Port Management Group
2.0	May 2016	Final Document	Coffey Environments Pty Ltd

# 1. INTRODUCTION

## 1.1 Our Organisation

Darwin Port Operations Pty Ltd (DP) is part of the Landbridge Group and was appointed Port Operator in accordance with the Northern Territory *Ports Management Act* on 13 October 2015. The Port Operator is responsible for the management, control and operation of the Port of Darwin. DP's vision, mission and values are summarised as follows.

**Our Vision:** Port of Darwin, to be Australia's Northern Gateway Port.

**Our Mission:** To strategically develop the Port of Darwin and facilitate trade for the benefit of the Northern Territory, our stakeholders and customers.

**Our Values:** We are committed to high quality outcomes, embracing continuous improvement, as reflected in:

- Ethical and transparent conduct.
- Respect for employees.
- Responsible safety, security and environmental practices.
- Relationships with stakeholders.
- Motivating work environments.

Contact details for the Darwin Port Operations:

Street address:  
Port Administration Building  
11 Export Drive  
East Arm, Northern Territory

Postal address:  
GPO Box 390  
Darwin, Northern Territory 0801

Phone: 1300 327 946  
Internet: [www.darwinport.com.au](http://www.darwinport.com.au)  
Email: [darwinport@darwinport.com.au](mailto:darwinport@darwinport.com.au)

## 1.2 Scope and Intent of the EMP

DP recognises the environmental, social and economic importance of operating in an environmentally sustainable and responsible manner and ensuring a high level of environmental performance and is committed to achieving this through continual improvement of its environmental management system (EMS). This EMP forms a part of DP's Environmental Management System (EMS) and should be read in conjunction with the DP "Port Safety Plan".

The EMP is also a requirement under the Port Operating Deed, and as such a copy of the EMP and EMP certification must be provided to the Northern Territory Government six months after commencement of Port lease and on or prior to 30 June 2020; and at least every five years after 30 June 2020.

This EMP sets out the high-level framework, objectives and targets for sound and responsible environmental management within DP areas of responsibility as defined under the Ports Management Act.

The key areas of responsibility are:

- East Arm Wharf.
- Fort Hill Wharf.
- Port of Darwin waters.

The EMP sets the framework for issue and aspect specific management plans, standard operating procedures, training procedures and manuals, monitoring procedures and auditing procedures. This EMP is prepared for:

- DP employees and contractors engaged.
- Port Users including leasee's, licensee's, stevedores and their contractors. This is in addition to the Port Users' Environmental Management Plans and procedures.

The intent of the EMP is that it is a dynamic document that is subject to regular review and continual improvement. The EMP is to be used on an ongoing basis to guide and inform environmental planning and management of the Darwin Port. The EMP will be reviewed and updated to reflect any significant changes in DP's environmental risks, impacts, management strategies or legislative requirements. This EMP also provides an overview of the existing environment of Darwin Port and describes the roles and responsibilities of DP, Port Users and other organisations.

### **1.3 DP EMP Nominated Representative**

The Chief Executive Officer of DP and the Port Management Group are responsible for the effective implementation of this EMP. Authorisation and endorsement of responsibilities within the EMP rest with this role.

The administration of the EMP document is the responsibility of the Environmental Manager under the management of the General Manager Corporate Services, to ensure the document is regularly reviewed and updated.

### **1.4 Structure of this Document**

This EMP has the following sections:

- Chapter 1: introduces the EMP.
- Chapter 2: describes the environmental management system, legislative and regulatory environment and roles and responsibilities.
- Chapter 3: includes information on the existing environment, including different Darwin Port precincts, services and facilities.
- Chapter 4: describes how issues are identified and risk ranked and the process of setting objectives and targets that will address these issues.
- Chapter 5: describes how the key environmental aspects relating to Darwin Port are to be managed, with reference to the objectives and targets and the management strategies.
- Chapter 6: describes emergency preparedness, response and recovery, incident management and corrective action process.
- Chapter 7: describes the monitoring, auditing and record keeping processes that are designed to check for compliance with the EMS.
- Chapter 8: describes the administration of environmental records and reports for the Darwin Port.

- Chapter 9: glossary and abbreviations.
- Chapter 10: references and bibliography.

## 2. ENVIRONMENTAL MANAGEMENT FRAMEWORK

### 2.1 Overview of the Environmental Management System

An Environmental Management System (EMS) is a mechanism to systematically manage an organisation's environmental issues.

The DP's EMS is based on the requirements of ISO14001:2015 (International Standard for Environmental Management Systems). A major review of DP's EMS is planned for 2016/17 with a view to gaining ISO14001 certification.

There are 12 EMS procedures (EMSPs) that explain the operation of the EMS and are summarised as follows:

1. **Issues.** This procedure details the method by which DP identifies its environmental issues and the actual or potential impacts associated with those issues.
2. **Legal and Other Requirements.** This procedure enables relevant DP employees to interpret legislative and other statutory requirements and determine other requirements (e.g. operational conditions) applicable to the business.
3. **Objectives and Targets.** This procedure assists the Port Management Group set environmental objectives and targets, based on the impacts identified and the risk ranking assigned in the Issues Register to achieve the goals outlined in the Environmental Policy.
4. **Training, Awareness and Competence.** This procedure provides guidelines for environmental awareness training of relevant DP employees to ensure DP personnel have the specific skills, knowledge and competency levels in their roles to achieve the goals of the Environmental Policy; and that appropriate training is provided where gaps in skills, knowledge and/or competency are identified.
5. **Communication and Reporting.** This procedure ensures that there is clear communication on environmental issues within DP; and a system for receiving, documenting and responding to relevant communication from external interested parties.
6. **Document Control.** This procedure describes the procedure for the control of all documentation relating to the EMS.
7. **Emergency Preparedness and Response.** This procedure provides DP with a framework to establish and maintain procedures to identify the potential for and to respond to accidents and emergencies, and for preventing and mitigating the environmental impacts that may be associated with them.
8. **Monitoring and Measurement.** The purpose of this procedure is to ensure that effective monitoring and measurement of DP activities that may have a significant impact on the environment are undertaken on a regular basis.
9. **Non-conformance, Corrective and Preventative Action.** This procedure provides a guideline for DP to ensure that major technical non-conformances are identified and included on the Issues Register; and system non-conformances are identified and addressed prior to the finalisation of the audit report.
10. **Records.** This procedure provides guidelines for the identification, maintenance and disposal of environmental records.
11. **Management System Audit.** This procedure describes the methods and responsibilities for the planning, preparation, performance, reporting and follow up of the EMS Audits.

**12. Management Review.** This procedure provides a guideline for the Management Review of DP's Environmental Management System.

An EMS consists of five main elements: policy; plan; do; check; and review. The relationship between the policy, procedures, EMPs, and other documents is summarised in Figure 2.1.

This EMP describes the key elements of the EMS in relation to the Port of Darwin. As described in Section 1.2, the EMP is a high level document, which describes the general issues, objectives and targets for the Port of Darwin. Sitting below the EMP there will be issue specific management plans (e.g., a stormwater management plan), standard operating procedures (e.g., procedure for clean up following cattle loading), training procedures and manuals, monitoring procedures and auditing procedures.

The DP's environmental policy is provided in Figure 2.2. The environmental policy outlines the overall intention and direction of the DP in relation to its environmental performance and is endorsed by the Chief Executive Officer and the Port Management Group. The environmental policy requires that the DP develops and maintains an EMS, provides sufficient resources to achieve its environmental targets and seeks to prevent pollution from its activities. Compliance with the policy is required by DP employees, contractors and those otherwise engaged.



Figure 2.1 Environmental management system structure

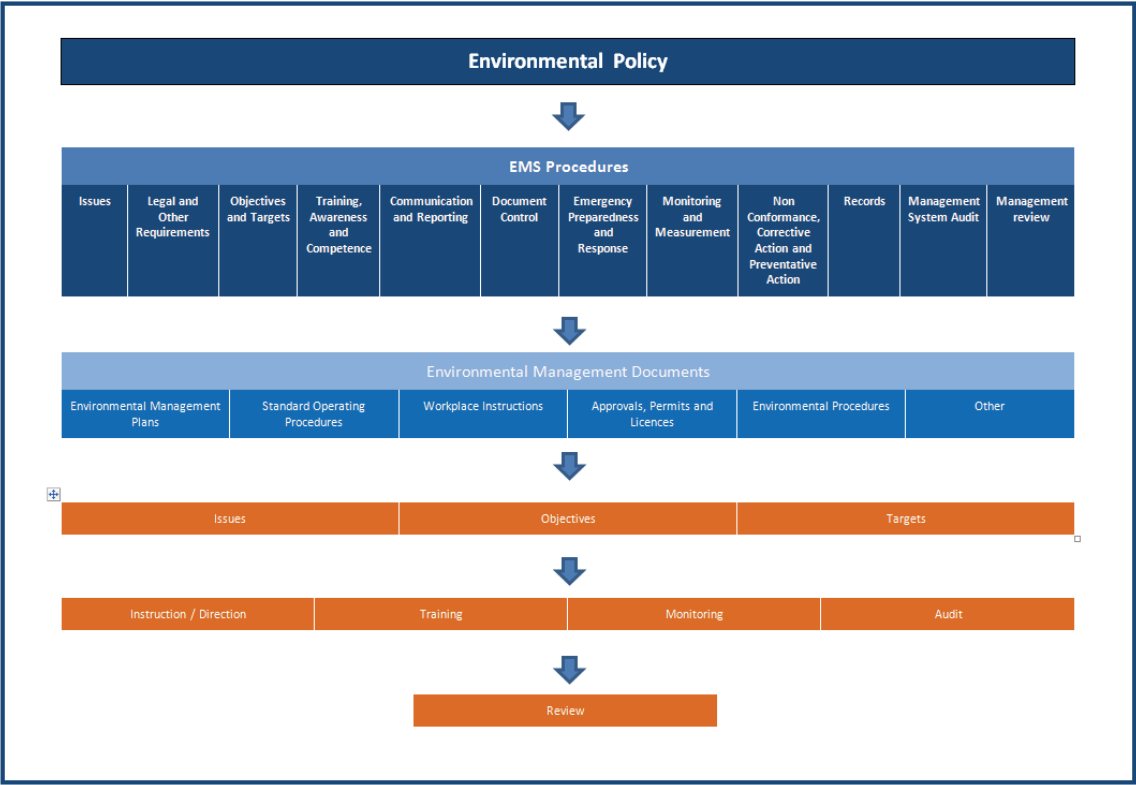


Figure 2.2 Environmental policy



## ENVIRONMENTAL POLICY STATEMENT

Darwin Port (DP) manages aspects and operates within the Port of Darwin. DP recognises the environmental, social and economic importance of operating in an environmentally sustainable and responsible manner. We will ensure a high level of environmental performance is achieved and are committed to continual improvement.

To achieve environmental performance consistent with this Policy, DP will:

- Develop and maintain an environmental management system, consistent with its activities, services and environmental impacts, that includes planning, setting objectives and targets, implementation and operation, monitoring performance, review and continuous improvement.
- Provide sufficient resources and training to achieve the targets defined in its environmental management system.
- Implement risk management techniques to assess impacts of DP's activities and to introduce appropriate mitigation measures.
- Comply with all applicable environmental laws, regulations, policies and standards which relate to its activities and services in a transparent manner.
- Seek to prevent pollution resulting from port activities and services.
- Communicate to employees and stakeholders this policy and DP's progress in meeting the objectives and targets defined in its environmental management system.
- Continually improve its environmental management and environmental performance.

The Chief Executive Officer and the Port Management Group are responsible for the effective implementation of this policy and all employees, tenants, licensees, service providers, other persons and those otherwise engaged at the workplace are expected to reasonably comply with requirements of this Policy.

Publicly available from: [www.darwinport.com.au](http://www.darwinport.com.au)



Terry O'Connor  
Chief Executive Officer



Melissa Reiter  
General Manager Corporate Services



Anne Coulter  
Chief Financial Officer



Peter Raines  
General Manager Facilities



Jan Niblock  
General Manager Operations



Peter Dummett  
General Manager Port Development

15 March 2016

## 2.2 Legislative and Regulatory Framework

DP and all Port users are required to comply with Commonwealth and Territory legislation. The main piece of legislation governing the activities at Port of Darwin is the *Ports Management Act* and the Ports Management Regulations.

From an environmental perspective, activities undertaken at the Port of Darwin are governed by a range of Commonwealth and Northern Territory legislation, policies and guidelines, which include the following (key legislation is listed in bold type):

- Commonwealth legislation:
  - *Aboriginal and Torres Strait Islander Heritage Protection Act 1984.*
  - ***Biosecurity (Consequential Amendments and Transitional Provisions) Act 2015.***
  - ***Biosecurity Act 2015.***
  - ***Biosecurity Regulations*** (In draft as at May 2016).
  - *Coastal Waters (Northern Territory Title) Act 1980.*
  - ***Environment Protection and Biodiversity Conservation Act 1999.***
  - ***Environment Protection and Biodiversity Conservation Regulations 2000.***
  - *Environment Protection (Sea Dumping) Act 1981.*
  - *Environment Protection (Sea Dumping) Regulations 1983.*
  - *Hazardous Waste (Regulation of Exports and Imports) Act 1989.*
  - *Hazardous Waste (Regulation of Exports and Imports) Regulations 1996.*
  - *National Greenhouse and Energy Reporting Act 2007.*
  - *Ozone Protection and Synthetic Greenhouse Gas Management Act 1989.*
  - *Ozone Protection and Synthetic Greenhouse Gas Management Regulations 1995.*
  - *Quarantine Act 1908* (functions to be replaced by the Biosecurity Act 2015 in mid 2016).
  - *Quarantine Regulations 2000* (functions to be replaced by the Biosecurity Regulations in mid 2016).
- Northern Territory legislation:
  - *Building Act 1993.*
  - *Building Regulations 1993.*
  - *Dangerous Goods Act 1998.*
  - *Dangerous Goods Regulations 1985.*
  - ***Environmental Assessment Act 1982.***
  - ***Environmental Assessment Administrative Procedures.***
  - *Environmental Offences and Penalties Act 1996.*
  - *Fisheries Act 1988.*
  - *Fisheries Regulations 1992.*
  - ***Heritage Conservation Act 1991.***
  - ***Heritage Conservation Regulations.***
  - *Litter Act 1972.*
  - ***Marine Pollution Act 1999.***
  - ***Marine Pollution Regulations 2003.***
  - *National Environment Protection Council (NT) Act 1994.*
  - *Northern Territory Aboriginal Sacred Sites Act 1989.*
  - *Northern Territory Aboriginal Sacred Sites Regulations 2004.*
  - *Nuclear Waste Transport, Storage and Disposal (Prohibition) Act 2004.*
  - ***Planning Act 1999.***
  - ***Planning Act Regulations.***
  - ***Ports Management Act 2015.***
  - ***Ports Management Regulations 2015.***
  - *Public and Environmental Health Act 2011.*
  - *Public and Environmental Health Regulations 2011.*

- *Public Health (General Sanitation, Mosquito Prevention, Rat Exclusion and Prevention) Regulations 1960.*
- *Soil Conservation and Land Utilisation Act 1969.*
- *Territory Parks and Wildlife Conservation Act 1976.*
- *Territory Parks and Wildlife Conservation By Laws.*
- ***Waste Management and Pollution Control Act 1998.***
- ***Waste Management and Pollution Control (Administration Regulations) 1998.***
- ***Water Act 1992.***
- ***Water Regulations 1992.***
- *Weeds Management Act 2001.*
- *Weeds Management Regulations.*
- *Workplace Health and Safety Act 2007.*
- *Workplace Health and Safety Regulations.*

For further detail on legislative requirements refer to Attachment B, the DP EMS Legal Register (Minter Ellison, 2010; updated by DP, 2016).

## 2.3 Environmental Guidelines

A number of plans, strategies, standards and guidelines have been produced by commonwealth, state and territory governments, which are to be used as a reference to guide operational activities. DP and Port Users are to consider these documents for determining good environmental practice. Some of these documents have legal compliance implications and include:

### General

- ISO 14001:2015 Requirements for an Environmental Management System.
- AS/NZS 4360:2004 Standard on Risk Management.
- International Convention on the Prevention of Pollution from Ships (MARPOL).

### Water

- A Stormwater Strategy for the Darwin Harbour Region, Northern Territory Environmental Protection Authority, May 2014.
- Anti-fouling and in-water cleaning guidelines June 2013 (Department of Agriculture).
- Australian and New Zealand Guidelines for Fresh and Marine Water Quality (ANZECC/ARMCANZ, 2000).
- Darwin Harbour Strategy (DHAC, 2010).
- Declaration of Beneficial Uses and Objectives, Darwin Harbour Region (Water Act).
- National Water Quality Management Strategy.
- Policy on the Protection of Darwin Harbour and its Coastline (TOPROC, 1999).
- Water Quality Objectives for the Darwin Harbour Region - Background Document (DNRETAS, 2010).

### Air

- National Environment protection (Ambient Air Quality) Measure 1999.
- National Environment Protection Measure for Ambient Air Quality – Monitoring Plan for the Northern Territory (LPE, 2001).

## **Land**

- National Environment Protection (Assessment of Site Contamination) Measure.

## **Waste**

- Environmental Protection (National Pollution Inventory) Objective (NT).

## **Pests**

- Guidelines for Preventing Mosquito Breeding Associated with Construction Practice Near Tidal Areas in the NT (DHF, 2005).

## **Noise**

- Noise guidelines for development sites In the Northern Territory January 2013.

## **Energy and Greenhouse**

- National Environment Protection (National Pollutant Inventory) Measure 1998.
- National Greenhouse and Energy Reporting (Measurement) Determination 2008.

## **Oil Spill and Emergency**

- NT Marine Pollution Contingency Plan (which supports the National Plan to Combat Pollution of the sea by Oil and other Noxious and Hazardous Substances).
- Northern Territory Oil Spill Contingency Plan (1998).

## **Dredging**

- Guidelines for the Environmental Assessment of Marine Dredging in the Northern Territory
- National Assessment Guidelines for Dredging 2009.

## **2.3 Relevant Documents to this EMP**

Other plans relevant to this EMP are listed in Table 2.1, along with the party responsible for ensuring compliance with the plan.

**Table 2.1 Relevant documents to this EMP**

<b>Plan</b>	<b>Context</b>	<b>Responsible Party</b>
Darwin Port Oil Spill Contingency Plan	Oil spills	DP
Northern Territory Oil Spill Contingency Plan	Large oil spills	Northern Territory Government – Department of Transport / NTEPA
Emergency and Crisis Management Plan	Port emergency	DP
National Plan for Maritime Environmental Emergencies	National emergencies	AMSA
Northern Territory All Hazards Emergency Management Arrangements	Northern Territory Emergency Structure	Northern Territory Government – Northern Territory Emergency Services
NT Planning Scheme	Planning	Northern Territory Government – Department of Lands, Planning and the Environment. Development Consent Authority

**Table 2.1 Relevant documents to this EMP**

<b>Plan</b>	<b>Context</b>	<b>Responsible Party</b>
Port Environment Protection Plan	East Arm Wharf EPBC Act Approval – Harbour Controls	DP
Dredging and Dredge Spoil Placement Management Plan (various)	East Arm Wharf EPBC Act Approval / Darwin Port Projects – Dredging	DP
Migratory Bird Management Plan	East Arm Wharf EPBC Act Approval – Pond D protection, Migratory birds	DP
Biodiversity Impact Mitigation and Offsets Strategy	East Arm Wharf EPBC Act Approval – biodiversity offset strategy	DP
Coastal Offsets Plan	East Arm Wharf EPBC Act Approval – coastal offsets	Northern Territory Government – Department of Lands, Planning and the Environment
Environmental Management Plan – Refrigerated Container Park	Development Permit requirement.	DP
Port Safety Plan	In accordance with Ports Management Act.	DP

## 2.3 Roles and Responsibilities

### 2.3.1 Darwin Port Operations Pty Ltd

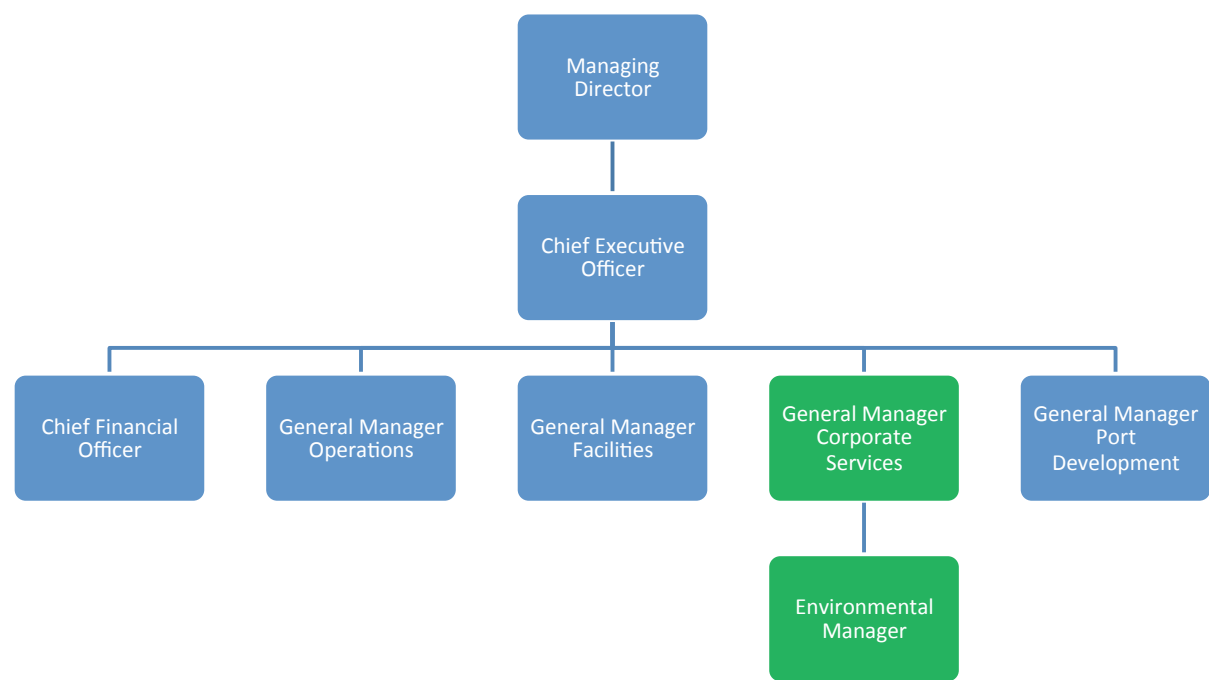
The DP is ultimately responsible for the control and management of its facilities. The *Ports Management Act* defines the general roles, responsibilities and powers of the DP and places additional responsibilities on DP in relation to the waters and lands within the declared Port of Darwin. The EMS describes roles and responsibilities in relation to the environmental management system.

The DP's Chief Executive Officer is ultimately responsible for the DP's environmental performance. The organisational structure of the DP is shown in Figure 2.3.

DP's Environmental Manager's role sits under the General Manager Corporate Services. This role includes overseeing and monitoring environmental performance and provides a number of functions including:

- Overseeing all aspects of the Environmental Management System (including legal register, record register, issues register, document control, quality control and reviews).
- Providing environmental technical advice and information.
- Facilitating environmental risk assessments.
- Contributing to, assessing and commenting on environmental aspects of proposed developments.
- Facilitating regular environmental inspections and audits.
- Maintaining the Environment Incident Register.

Figure 2.3 Darwin Port organisational structure





- Ensuring all of DP's environmental issues and impacts are identified, documented and reviewed regularly.
- Proactively work towards environmental improvements.
- Advising the CEO that the necessary systems are in place to achieve environmental compliance.
- Conducting and reporting the findings of DP's monitoring programmes.
- Ensuring the management review of DP's EMS is undertaken on a biennial (2-yearly) basis and signs off on the reported outcomes.

### 2.3.2 Port Users

Port Users who propose to develop a new site at Darwin Port which is of a size or nature that may have an impact on the environment from construction activities or operational activities are to prepare an Environmental Management Plan (or equivalent documentation) to address the identified risks.

Port Users including lessees (see Table 2.2), licensee's, stevedore's and others that conduct activities within areas under DP's responsibility are to comply with:

- Conditions in their lease, licence and other approvals. Typical environmental related clauses in licences to occupy are detailed in Attachment A.
- The Port Users environmental management plans and procedures.
- DP's Environmental Management Plan and procedures.
- Commonwealth and Territory legislative requirements.

**Table 2.2 Current lessees / occupiers**

Lessees / Occupier	Description of area
Patricks Stevedores	Stevedore and Leased/Licensed container storage areas.
QUBE	Stevedore and Leased/Licensed container storage areas.
ASCO - Baker Hughes Intertek (sublease from Asco)	Marine Supply Base
OM Manganese	Manganese Ore Stockpile at East Arm Wharf Precinct.
TOLL Remote Logistics	New berth at end of East Arm Wharf for Australian Border Force vessels.
VOPAK	Fuel and acid pipeline and terminal
Genesee & Wyoming Australia	Train line

### 2.3.3 Health, Safety, Environment and Security Steering Committee

This internal committee is tasked with ensuring DP's commitment to providing and maintaining a safe, healthy, secure and environmentally responsible worksite.

The committee meets monthly and comprises of representatives from the DP's senior management, together with staff experienced in the fields of environmental management, work place health and safety, and security. The functions of this committee are detailed in its Terms of Reference.

DP also holds a weekly Health, Safety, Security and Environmental - Operational Managers Meeting to ensure issues and incidents are discussed and resolved in a timely manner and that operations are planned and considered from a safety, security and environmental perspective.

#### **2.3.4 Port User Group**

The Port User Group is a forum for communication and discussion between DP and all users of the Port and its facilities. The Port User Group can be used to discuss a variety of topics including operations, safety and environment.

#### **2.3.5 Commonwealth Government Agencies**

##### **Australian Maritime Safety Authority (AMSA) (Commonwealth)**

The *Australian Maritime Safety Authority Act 1990* (Commonwealth) sets out the functions of the AMSA. Responsibilities include the protection of the marine environment from ship sourced pollution within their jurisdiction. The AMSA also has responsibilities under a variety of legislation relating to protection of the marine environment including the *Protection of the Sea (Prevention of Pollution from Ships) Act 1983* (Commonwealth).

AMSA administers the National Plan to Combat Pollution of the Sea by Oil and Other Noxious and Hazardous Substances and is responsible for coordinating, investigating and cleaning up oil spills of national significance.

##### **Department of Agriculture and Water Resources - Biosecurity Australia (Commonwealth)**

Biosecurity Australia is the federal government agency providing quarantine and biosecurity services for the arrival of international passengers, cargo, mail, animals and plants and their products into Australia.

Biosecurity Australia is responsible for the management of ballast water issues, including monitoring of compliance of shipping with the Australian Ballast Water Management Requirements (AQIS) 2001 at each first port of call in Australia. These requirements are designed to reduce the risk of introduced harmful aquatic organisms into Australia's marine environment through ship's ballast water.

Biosecurity Australia also inspects and certifies a range of animal and plant products exported from Australia.

##### **Australian Border Force (Commonwealth)**

The Australian Border Force manages the security and integrity of Australia's borders. They undertake a number of activities within the Darwin Port including security checks of International vessels.

#### **2.3.6 Northern Territory Government Agencies**

##### **NT Environment Protection Authority (NT EPA)**

The NT EPA is the main environmental regulator with regard to approvals, pollution incidents and waste management. The key legislation they administer is the *Waste Management and Pollution Control Act*, *Water Act*, *Environmental Assessment Act* and the *Marine Pollution Act*. This includes assessment and management of Environmental Impact Assessments, Public Environmental Reports, Incident Notification, Pollution Incident enforcement, Waste Discharge Licencing and Environmental Protection Licencing.

**Department of Lands, Planning and Environment**

The planning function of this department is responsible for the *Planning Act*, which includes development consent approval for projects that may have environmental conditions. Port facilities are also subject to planning schemes and other planning controls. The heritage section is responsible for protecting historically significant areas under the Heritage Act, which includes shipwrecks.

**Aboriginal Areas Protection Authority**

This Authority administers the *Northern Territory Aboriginal Sacred Sites Act* to protect such sites from damage and interference. Assessments will be conducted on land proposed to be developed to identify any significant sites, and where permitted a certificate issued with any necessary conditions.

**Department of Primary Industries and Fisheries**

The aquatic biosecurity section is responsible for the monitoring and response to marine pest incursions. Specific monitoring activities occur at East Arm Wharf and Fort Hill Wharf. The department also has other functions to protect the biosecurity of the Northern Territory from land based pests and diseases.

This department is also responsible for issuing permits for activities that may impact on fish and other marine life. These permits may be required for dredging projects.

### 3. DESCRIPTION OF THE PORT OF DARWIN

#### 3.1 Overview

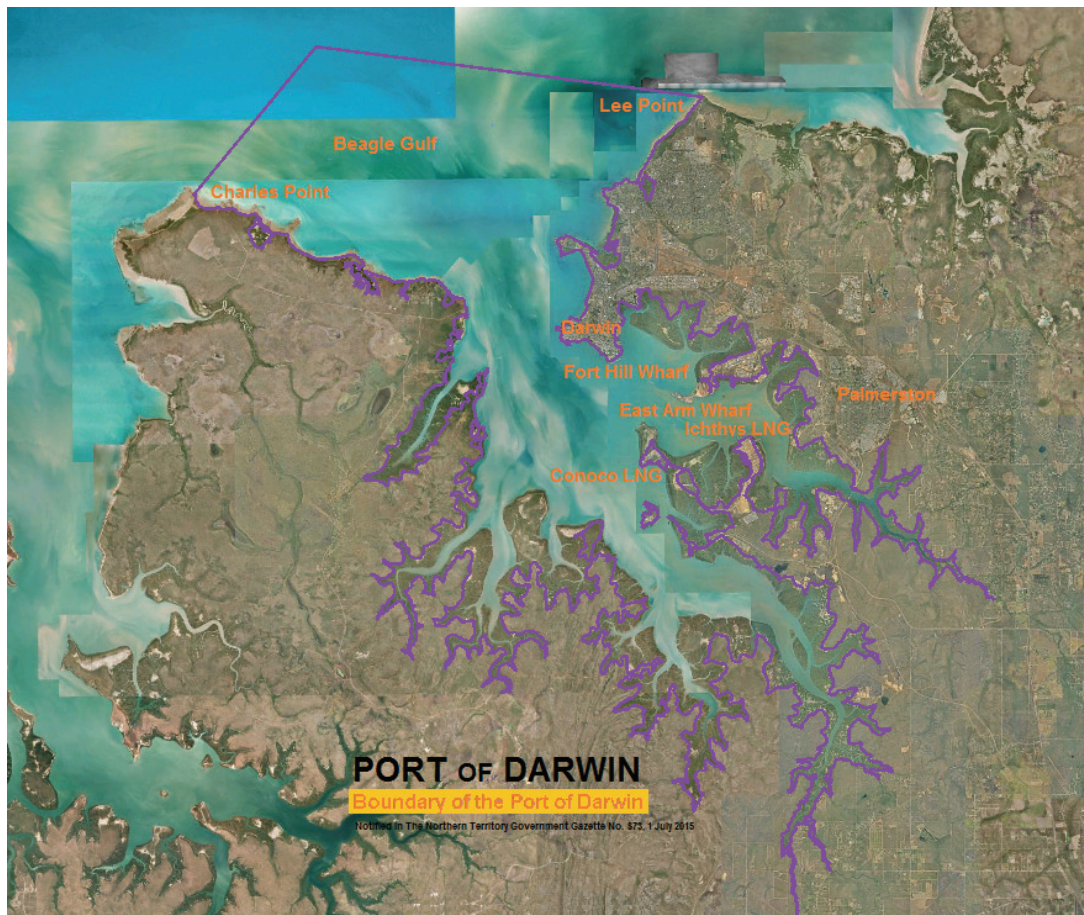
The Port of Darwin is a deep sea port located on the southern shore of the Beagle Gulf in the Timor Sea, and encompasses an area of approximately 1,000 km<sup>2</sup>. The Port of Darwin's strategic geographical location is often referred to as 'Australia's Northern Gateway to Asia' (Figure 3.1) and the port's proximity to the oil and gas fields in the Timor and Arafura seas is fundamental to the nation's planned growth.

**Figure 3.1 Port of Darwin – Australia's Northern Gateway to Asia**



The Port of Darwin boundaries are created by a declaration by the Minister for Transport under section 7 of the *Ports Management Act*. This is declared in the Northern Territory Government Gazette No. S73, 30 June 2015. The northern boundary is defined by a line from Charles Point to Lee Point via a point at 12° 18' 11" S, 130° 41' 3.5" E (WGS 84). It includes the land and water components within these boundaries, as indicated on Figure 3.2.

**Figure 3.2 Port of Darwin Boundaries**



The Port of Darwin has many industrial, commercial, recreational and environmental uses. Infrastructure in and around the Port of Darwin is owned and operated by various government and private entities as summarised in Table 3.1. The Port of Darwin contains the following vessel and shipping infrastructure (Figure 3.3):

**Table 3.1 Port of Darwin infrastructure**

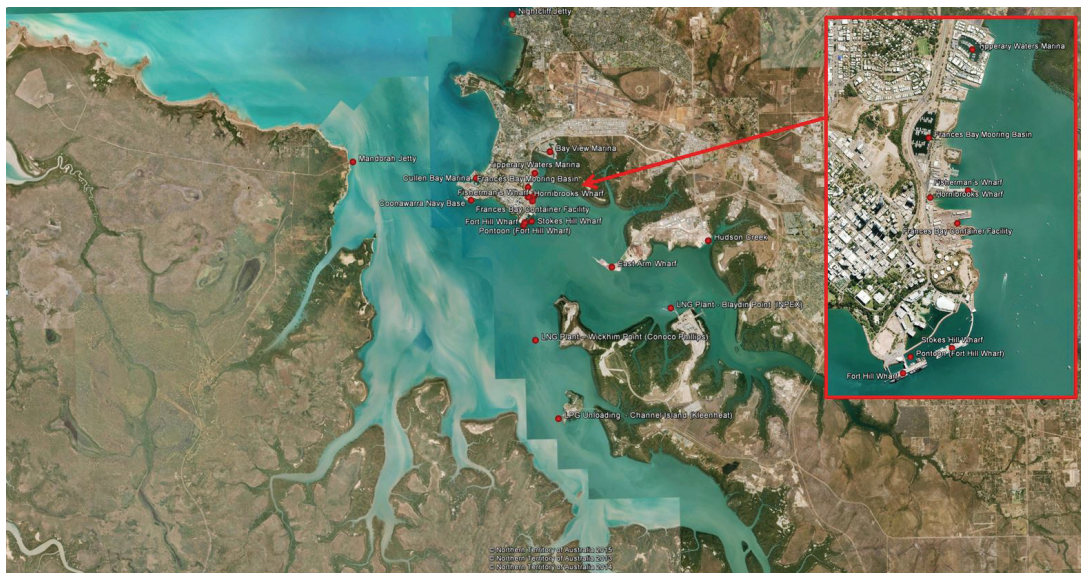
DP facilities	
East Arm Wharf (Figure 3.4)	General cargo, containers, bulk liquids, bulk minerals, cement clinker, livestock, new vehicles, oil and gas rig supply.
Fort Hill Wharf (Figure 3.5)	Cruise ships, navy vessels, tug boat, pilot boat.
Harbour anchorages	Large vessel anchoring.
Shipping channels, navigational aids	Natural and dredged channels for large vessels.
NT Government and council facilities	
Frances Bay Mooring Basin	Fishing and other commercial vessels mooring.
Fisherman's Wharf	Fishing and other commercial vessels, refuelling.



### Table 3.1 Port of Darwin infrastructure

Hornibrooks Wharf	Vessel repair.
Stokes Hill Wharf	Public, eateries, harbour cruises.
Nightcliff Jetty	Public recreation.
Mandorah Jetty	Ferry services, public recreation.
Boat ramps for small recreational vessels.	Recreational vessels.
<b>Defence Facilities (Commonwealth Government)</b>	
Coonawarra Navy Base	Defence
<b>Private facilities</b>	
LNG Plant - Bladin Point (INPEX)	Liquid natural gas processing.
LNG Plant – Wickham Point (Conoco Phillips)	Liquid natural gas processing.
LPG Unloading - Channel Island (Kleenheat)	Liquid petroleum gas unloading.
Cullen Bay Marina	Marina - pleasure craft / commercial.
Tipperary Waters Marina	Marina - pleasure craft.
Bay View Marina	Marina - pleasure craft.
Hudson Creek	Barge ramps and berth.
Pontoon (Fort Hill Wharf)	Mooring, crew transfers.
Frances Bay Container Facility	Barge and containers.

**Figure 3.3 Port of Darwin Infrastructure**



**Figure 3.4 East Arm Wharf Precinct**



The East Arm Wharf precinct covers an area of approximately 50 ha and includes the wharf, administration area, cargo storage and back up area, workshop areas, ponds and stockpiles. The East Arm Wharf is a 24 hours / day facility incorporating 754 m of continuous berth face; 600 m of land-backed berth and 154 m of bulk liquids berth. A dry bulk materials handling facility features a ship loader designed to load panamax size vessels. A multi-user berth caters for vessels handling general cargo, live cattle exports, liquid and dry bulk imports, containerised/breakbulk and specialised heavy lift cargoes, plus offshore rig tender service vessels.

**Figure 3.5 Fort Hill Wharf Precinct**



Fort Hill Wharf is DP's cruise ship and defence vessel facility, it also provides berthage for tugs and pilot boats. A purpose built cruise ship terminal provides for changeovers for smaller cruise vessels and transiting lounge areas for larger international cruise ships.



## **3.2 Land Tenure and Zoning**

The East Arm Wharf and surrounding infrastructure is designated the 'East Arm Port Development Zone' and is Zoned DV. Zone DV allows for development of major strategic industries. Fort Hill Wharf is zoned as CB (Central Business) along with the majority of Darwin City central business district. Developments and activities can only proceed in accordance with these planning controls.

Land associated with East Arm Wharf and Fort Hill Wharf consists of parcels of freehold title which is leased from The Northern Territory Government. Areas are then either used exclusively by DP, subleased to other entities or are "Common User" for various entities to use from time to time. The remaining Port of Darwin area consists of land and sea that is either privately owned freehold, leased from the Northern Territory Government, owned and managed by the Northern Territory Government, Unoccupied Crown land, Commonwealth land or other land ownership and occupancy arrangements.

## **3.3 Existing Environment**

### **3.3.1 Climate**

The Darwin region has a monsoonal climate, with a wet season lasting from October to April and the remainder of the year referred to as the dry season. During the transition from the dry season and throughout the wet season Darwin and surrounding areas experience many isolated, intense, electrical and high rainfall storms.

Darwin's mean annual rainfall of 1,727.5 mm (Bureau of Meteorology data from Darwin Airport weather station (Station # 014015)) is highly seasonal varying from 1.2 mm in July to 423.7 mm in January.

Temperatures tend to remain within a relatively narrow range throughout the year. The annual mean minimum temperature is 23.2 °C and the annual mean maximum temperature is 32.0 °C. Lowest temperatures and least rainfall occur in June and July, whereas the highest temperatures occur in the months of October and November. The annual mean daily evaporation is 6.7 mm and monthly figures range from 5.7 mm a day to 7.9 mm a day.

Wind direction during the wet season is predominantly from the west and northwest and during the dry season the wind direction is predominantly from the east and southeast.

Tropical cyclones (low pressure systems) commonly form during the wet season. The timings of cyclones can link with high tides to develop storm surges along the coastline. Much of the Darwin Harbour coastline is within the storm surge zone for Darwin, including wharf facilities.

### **3.3.2 Cultural Heritage**

Many areas within the Darwin Harbour region have cultural and spiritual significance. Of particular indigenous significance are the undisturbed mangrove forests and mudflats surrounding the harbour and Catalina Island and the associated sandbar.

East Arm was used as a quarantine station and a WW II base in the 1940's. There are also a number of military aircraft and shipwrecks in Darwin Harbour that are of historical significance. Including Kelat shipwreck and a WWII Catalina flying boat which is located close to East Arm Wharf. A number of ship wrecks also resulted from Cyclone Tracy in 1974. Many of these wrecks are protected. Details of shipwrecks can be found on the Commonwealths Governments Australian National Shipwrecks Database. Other wrecks are listed on the Northern Territory Government websites.

Other nearby areas of cultural and natural significance include Charles Darwin National Park, Channel Island Coastal Reserve and Channel Island reefs.

**Figure 3.6 Shipwrecks and significant sites (selected sites)**



### 3.3.3 Soils and Landform

In the vicinity of the East Arm Wharf there are two landforms, the bustard and littoral land systems. These systems are generally aligned with the topography. The coastal zone, which is largely intertidal is made up of the littoral landform and is comprised of clay materials and quartz silts. The coastal zone may also contain acid sulphate soils. The hinterland and low rolling hills are part of the bustard landform, the lower slopes of which are comprised of laterites and the upper slopes lithosols.

East Arm Wharf is a solid fill wharf and is constructed over North Shell Island and surrounding waters on fill that has been sourced from the local land area and from dredging the sea bed. The piled section of East Arm Wharf sits over the sea. Fort Hill Wharf is a pile wharf that sits over the sea.

### 3.3.4 Surface Water

Port of Darwin receives fresh water from three rivers – the Darwin, Blackmore and Elizabeth rivers. The bulk of flow occurs during the wet season with very little flows during the drier months. There are also inflows from smaller creeks and drains. Additionally, run-off potentially containing

suspended particulate matter, inorganic and organic nutrients and a wide range of other constituents enter the estuary from the surrounding developed and undeveloped sections of the catchment area.

### **3.3.5 Marine Waters**

Water quality in Darwin Harbour is dependent on tides, seasons and location within the harbour. The marine waters around East Arm Wharf, in common with most other estuarine systems, are subject to significant seasonal fluctuations in salinity and temperature. Water quality objectives for various parameters are set in the "Water Quality Objectives for the Darwin Harbour Region - Background Document". Marine waters at all DP facilities tend to attract marine life due to structures creating suitable habitat.

Darwin Harbour has a high tidal range with a maximum tidal range of around 8 m. The large tidal movement produces strong currents. Two high tides and two low tides are experienced daily and the tidal range fluctuates over a lunar cycle. The following average tide data occurs in the Darwin Harbour area:

- Mean spring tide: 6.9 m (high) and 1.3 m (low).
- Mean neap tide: 5.0 m (high) and 3.2 m (low).

### **3.3.6 Groundwater**

Groundwater immediately surrounding the Port of Darwin are heavily influenced by sea water ingress. Groundwater in these areas is not used for domestic or industrial purposes.

### **3.3.7 Flora and Fauna**

The closest national park to the East Arm Wharf is Charles Darwin National Park, which is located on the coastline between the Central Business District of Darwin and East Arm Wharf.

#### ***Marine and Mangrove Environment***

Much of Darwin Harbour is characterised by mangrove forest lining the tidal boundaries and growing in fine sediments, with 36 species of mangrove covering more than 26,000 ha. Seagrass beds are known to occur near Casuarina Beach, Talc Head and Gunn Point but there is little knowledge of their composition or extent. Seagrass beds have not been identified in the East Arm area.

It is estimated that hard surfaces cover less than 20% of the inter-tidal and sub-tidal area of the Darwin Harbour region. Soft surfaces consisting of muds and fine sand are estimated to cover approximately 80% of the sea floor of the harbour. Coral dominated rocky reefs are located in the lower inter-tidal to high sub-tidal areas within depths of 5 to 10 m.

#### ***Marine Fauna***

Three species of dolphin (Australian Snubfin - *Orcaella heinsohni*, Indo-Pacific Humpback - *Sousa sahalensis* and the Indo-Pacific Bottlenose - *Tursiops aduncus*) and the Dugong (*Dugong dugon*) are commonly encountered within the Darwin Harbour region.

Six species of sea turtle occur within the Darwin Harbour area including the Flatback Turtle (*Natator depressus*) and Olive Ridley Turtle (*Lepidochelys olivacea*). The Saltwater Crocodile (*Crocodylus porosus*) also inhabits the harbour, though is actively removed from the harbour as part of a crocodile management program.

Darwin Harbour is home to approximately 415 species of fish, sharks and rays from 95 families.

The extent of marine invertebrate fauna in the Darwin Harbour region is not well known and is still being described. It is estimated that in excess of 3,000 marine invertebrate species exist within the harbour.

The harbour supports endemic and migratory bird species, including raptors, egrets, herons, gulls and terns. Many of the shorebirds that visit the mudflats are migratory species protected by the Japan Australia Migratory Bird Agreement (JAMBA) and the China Australia Migratory Bird Agreement (CAMBA).

### ***Terrestrial Environment***

There are no established vegetation communities at East Arm Wharf or Fort Hill Wharf.

## 4. RISK MANAGEMENT APPROACH

### 4.1 Identification of Issues

An aspects and impacts (issues) register has been prepared that includes issues and impacts related to the Port of Darwin. Environmental issues are those elements of an organisation's activities, products or services that can interact with the environment. For example, they could involve a discharge, an emission, waste, consumption or reuse of a material. They could also involve noise, odour, light or vibration. The Issues Register is a live register that is continually updated and revised.

An impact refers to any change to the built or physical environment, whether adverse or beneficial, wholly or partially resulting from an issue. Examples of impacts might include contamination of water or depletion of a natural resource.

The relationship between issues and impacts is one of cause and effect.

The Issues Register was compiled by undertaking an initial environmental risk assessment to identify issues and impacts of past and present activities. The assessment took into account issues and impact raised by:

- Consultant reports.
- Issue specific reviews/audits/reports.
- Internal and external audit reports.
- Other appropriate reports/documentation.
- Port Management Group.
- DP Environmental Manager.

The Issues Register is now a live document and any previously unidentified or new issues will be captured in this register.

For each issue entered into the issue register the following categories are completed:

- Issue number.
- Likelihood.
- Consequence.
- Resultant risk ranking.
- Location (as determined by key port precincts e.g., East Arm Wharf, Fort Hill Wharf).
- Activity, product or service.
- Description of the aspect or issue.
- Description of the impact.
- Description of the objective, i.e., what broad level goal is required that will result in the issue being addressed
- Description of the target, this is a specific action that is required. Each target describes the:
  - Attributes: item or aspect that is measured (number of environmental breaches).
  - Scale: measurement unit against which the attribute can be measured (oil spill statistics or licence compliance deviations).
  - Goal: describing what is to be achieved (5% reduction or % tested).
  - Timeframe: in which it is to be achieved.

- Description of person responsible for achieving the target.
- The percentage complete of the target, this tracks progress of addressing each issue.
- Reference, which describes the source document, report or communication that raised the issue.
- Comments, for any additional comments or explanations.

## 4.2 Assessment of Risk

Environmental risks can be grouped into the following two categories:

- Risk to the environment – this type of risk recognizes that activities undertaken by an organisation can cause some form of environmental change. Environmental risks can relate to flora and fauna, human health and wellbeing, human social and cultural welfare, earth, air and water resources, and energy and climate. The scope of each particular study needs to be defined.
- Risk to an organisation from environment-related issues – this type of risk includes the risk of not complying with existing (or future) legislation and criteria. Other risks include business losses an organisation may suffer as a result of poor management, such as loss of reputation, fines, costs of litigation, and from failure to secure and maintain a social licence to operate or appropriate approvals.

Each issue that is entered into the register is subject to a risk assessment using the risk matrix presented in Table 4.1. The risk ranking is a function of likelihood and consequence of the risk.

**Table 4.1 Risk ranking matrix**

<b>Likelihood</b>	<b>Almost Certain</b>	Medium	Medium	High	Extremely High	Extremely High
	<b>Likely</b>	Low	Medium	High	Extremely High	Extremely High
	<b>Possible</b>	Low	Medium	Medium	High	Extremely High
	<b>Rare</b>	Low	Low	Medium	High	High
		<b>Insignificant</b>	<b>Minor</b>	<b>Moderate</b>	<b>Major</b>	<b>Catastrophic</b>
<b>Consequence</b>						

Likelihood reflects the chance of risk, or an unwarranted outcome, actually occurring. It can be based on historical data or on an estimate arising from an assessment by a group of persons familiar with the business process being analysed. Likelihood should be reflected in the following categories:

- Almost Certain – will occur on a weekly basis; has been logged regularly; is known as an industry issue.
- Likely – may occur during a quarter year; has been logged several times; I would not be surprised if it happened.
- Possible – may occur on a yearly basis; has been logged at least once; 50 : 50 chance it will happen.



- Rare – may occur during a 5 year period; is conceivable but has not occurred; I would be surprised if it happened.

Consequence reflects the degree of impact of an unwarranted event. Owing to the diversity of the nature of risks faced by Darwin Port, the following factors are considered in determining the level of consequence as described in Table 4.2:

- Political impact.
- Financial impact.
- Employee and public safety impact.
- Business continuity impact.
- Environmental impact.
- Publicity impact and should be based on the following categories.

**Table 4.2 Consequence assessment table**

Consequence Severity Level	Consequence Factors					
	Political	Financial	Safety	Business Continuity	Environment	Media
<b>Catastrophic</b>	Coronial inquiry/ royal commission	> \$5 M	Death	Outage weeks	Major damage	Sustained coverage
<b>Major</b>	Ministerial inquiry	< \$5M	Multiple major injuries	Outage days	Some damage	Headlines and follow up reports
<b>Moderate</b>	Parliamentary mention	< \$500K	Major injury	Outage day	Little damage	Front page
<b>Minor</b>	No impact	< \$50 K	Minor injuries	Outage hours	No damage	Mentioned
<b>Insignificant</b>	No impact	< \$5 K	No injury	No outage	No damage	No impact

The risk assessments will result in DP having an understanding of the following:

- Previous environmental incidents and non-conformances.
- Existing policies and procedures dealing with procurement, transport, storage, use, disposal and contracting activities.
- Existing environmental management practices and procedures.
- Evaluation of performance compared with relevant internal performance criteria, external standards, regulations, codes of practice and guidelines.
- Identification of environmental issues of its activities, products or services so as to determine those that have or can have significant impacts and liabilities.
- Identification of legislative and regulatory requirements.
- Perceptions of management and employees.
- View of interested parties including local communities.
- Functions or activities of other DP systems that can enable or impede environmental performance.

## 4.3 Development of Objectives and Targets

The process for setting targets is as follows:

1. DP identifies and ranks its significant environmental impacts as described above.
2. Management reviews these and determine impacts whose level of risk warrants a management response with the setting of an objective and target(s).
3. Objectives and targets are set on an ongoing basis by the responsible Manager in consultation with the Environmental Manager.
4. In setting objectives consideration is given to the following:
  - DP's Environmental Policy.
  - Environmental impacts as identified in accordance with EMSP 1 – Issues.
  - Legislation and regulations as identified in accordance with procedure EMSP 2 – Legal and Other Requirements.
  - Business requirements.
  - Operating conditions.
  - Financial and technological options.
  - Views of interested parties (stakeholders).
5. Objectives are aimed at broad level improvements in environmental performance such as “Develop a waste management plan” and supported by specific performance targets such as “Prepare a plan that addresses all waste streams by September 2016”, or “Train all employees in spill response management techniques by December 2016”. Objectives may be addressed by a single target or a number of targets.
6. Targets are qualified wherever practicable in terms of attributes, scale, goal and timeframe.
7. Objectives and targets are recorded on the Issues Register.
8. General Managers are responsible for ensuring the objectives and targets are communicated to relevant employees.
9. The review and re-setting of objectives and targets is to be undertaken as required. Objectives and targets will also need to be reviewed and amended in line with changes to the Environmental Policy, legislation and/or new environmental impacts.

DP is in the early stage of this process in relation to its revised EMS. Once this process is complete this EMP, in particular Chapter 5 Management and Implementation should be revised to reflect the key issues, objectives and targets identified and established for Port of Darwin.



## **5. ENVIRONMENTAL MANAGEMENT AND IMPLEMENTATION**

### **5.1 Overview**

Potential impacts on the environment from activities within DP's area of responsibility are to be identified, managed and monitored in accordance with the Environmental Management System that complies with "ISO14001:2015 Requirements for an Environmental Management System".

This management and implementation section is presented by environmental attribute or aspect. The following attributes or aspects have been identified as being associated with the environmental performance of DP controlled areas:

- Systems.
- Regulatory compliance.
- Planning.
- Communication.
- Sustainability (energy, greenhouse gases and resources).
- Air quality.
- Land and soils.
- Water and marine sediments.
- Flora and fauna.
- Marine pests.
- Hydrocarbons and hazardous materials.
- Waste management.
- Cargo handling.

Objectives are set in this section, for each of these attributes or aspects and management strategies described.

### **5.2 Systems**

#### **5.2.1 Objective**

To ensure that the development and operations are undertaken in an environmentally sustainable and responsible manner and that the DP operates with a high level of environmental performance through continual improvement of its environmental management system.

#### **5.2.2 Management Strategies**

- Develop, maintain and continually improve the Environmental Management System to ISO14001:2015 standard.
- Assess and design developments and activities to allow a high level of environmental performance.
- All activities that present an environmental risk are to have documented management procedures (Workplace Instructions, Standard Operating Procedures and Management Plans) that are communicated and implemented.
- Use legislation, guidelines, standards, and other documents to set environmental standards.

## **5.3 Regulatory Compliance**

### **5.3.1 Objective**

To ensure that DP complies fully with all relevant environmental laws, regulations and enforceable guidelines in a transparent manner.

### **5.3.2 Management Strategies**

- Develop and maintain a comprehensive legislative register and have this accessible on the DP intranet.
- Develop and maintain a licence, approval and permit register for all environmental requirements. The register will detail the: licensing body, approval type, licence number, issue and expiry date, reference numbers, fees, applicable department.
- Identify any regulatory non-compliances and ensure that these are reflected in the Issues Register and action is taken to achieve compliance.
- Zero non-compliances with legal and other regulatory requirements in each year.
- Regularly conduct environmental audits and inspections for regulatory compliance.
- Update this EMP and other aspects of EMS in response to regular reviews of relevant legislation and guidelines.

## **5.4 Planning**

### **5.4.1 Objective**

To ensure environmentally sustainable development.

### **5.4.2 Management Strategies**

- All proposed significant infrastructure and alterations are considered and assessed for environmental impact during construction, operation and decommissioning.
- Environmental impact assessments, risk assessments and management plans are to be developed as part of project planning (scope of documents are to be commensurate with potential impacts/risks) and in accordance with relevant regulatory requirements (e.g., EPBC Act, Environmental Assessment Act, Planning Act).
- Plan for continuous environmental improvements of existing infrastructure.
- This EMP is reviewed on an annual basis and updated as required to ensure it accurately reflects planning related objectives, targets and management strategies.
- Planning issues to be captured in Issues Register and addressed.
- Ensure DP Procurement Policy requires the inclusion of environmentally responsible practices in the terms of reference and tender assessment criteria for all tenders including environmental management and site rehabilitation requirements.
- Consultation with relevant stakeholders (e.g., HSE Committee, Port User Group, Darwin Harbour Advisory Committee, regulators, Port Management Group) in relation to port infrastructure development and new port activities.

## **5.5 Communication**

### **5.5.1 Objective**

To ensure that all appropriate environmental information is available, accessible and communicated as appropriate to employees and stakeholders.

### **5.5.2 Management Strategies**

- DP Environmental policy to be publicly available via the DP website and included in port induction material.
- Communicate the environmental objectives and targets for the Port of Darwin to all stakeholders.
- Communicate progress on meeting objectives and targets for the Port of Darwin to all stakeholders.
- Use a variety of mediums to communicate information internally and externally, including the website, internal meetings, Port User meetings, port induction program, the intranet and stakeholder briefings.

## **5.6 Sustainability (Energy, Greenhouse Gases and Resources)**

### **5.6.1 Objective**

Promote sustainable development and operations that efficiently use energy and resources.

### **5.6.2 Management Strategies**

- All new developments (building and industrial facilities) are to be assessed and incorporate energy efficiency design.
- Monitor use and ensure efficient use of energy (i.e., electricity and fuel) to minimise greenhouse gas emissions and resource consumption.
- Monitor use and ensure efficient use of resources (e.g., water, consumables (paper etc.)) to minimise resource consumption.
- Report in accordance with the *National Greenhouse and Energy Reporting Act 2007*.

## **5.7 Air Quality**

### **5.7.1 Objectives**

To ensure that the development and operation of the Port of Darwin does not adversely impact on air quality.

### **5.7.2 Management Strategies**

- To comply with relevant regulatory and policy guidelines including:
  - National Environment Protection (Ambient Air Quality) Measure (NEPM).
  - National Environment Protection (Air Toxics) Measure (NEPM).
  - State Environment Protection Policy (Air Quality Management) (Victoria).
  - NOHSC:1003 Adopted National Exposure Standards for Atmospheric Contaminants in the Occupational Environment.
  - Other State and Territory guidelines that DP determines are relevant.

- To conduct air quality monitoring.
- To consider potential air quality issues for proposed developments.
- Address air quality issues in the aspects and impacts register and implement management actions (such as dust suppression).
- Enclosure of dust generating activities where operationally practical and efficient and implementation of appropriate dust suppression or capture technology where enclosure is not practical.
- Efficient operation of machinery, equipment and vehicles to minimise exhaust emissions.
- Clean up of residues and spills in a timely manner.
- Regular review of the efficiency of air quality management measures to ensure implementation of continuous improvement.

## **5.8 Land and Soils**

### **5.8.1 Objectives**

To ensure that port operations do not contaminate or pollute land and soils and to comply with the *Waste Management and Pollution Control Act*.

### **5.8.2 Management Strategies**

- Comply with relevant guidelines including the National Environmental Protection Council (Assessment of Site Contamination) Measure and the *Waste Management and Pollution Control Act*.
- Consider potential land and soil contamination issues for proposed developments.
- Focus on the prevention and management of wastes and discharges to land to prevent land contamination.
- Monitor soil for contaminants.
- Address land and soil contamination quality issues in the aspects and impacts register and implement management actions (such as clean up spills).
- Prevent contaminated fill and soil from being used.
- Assess and manage sediments that may be disturbed that are potentially acid sulphate soils.
- Land that is contaminated shall be cleaned up or actively managed to mitigate environmental harm.
- Where land has been cleared and is no longer required, stabilisation of surface soils will be undertaken through methods such as rehabilitation.

## **5.9 Water and Marine Sediments**

### **5.9.1 Objectives**

To ensure that port operations minimise consumption of fresh water and prevent pollution of surrounding waters (marine and surface water) and marine sediments and comply with relevant guidelines.

### **5.9.2 Management Strategies**

- Comply with relevant regulations and adopted guidelines including:

- *Marine Pollution Act.*
- *Waste Management and Pollution Control Act.*
- *Water Act.*
- Australian and New Zealand Guidelines for Fresh and Marine Water Quality (2000).
- Water Quality Objectives for the Darwin Harbour Region - Background Document, Declaration of Beneficial Uses and Objectives, Darwin Harbour Region.
- Darwin Harbour Strategy (Darwin Harbour Advisory Committee) (2010).
- Avoid contamination on the wharf and clean up any spills should they occur, to prevent contamination entering the stormwater runoff.
- Develop and implement a Stormwater Management Plan for East Arm Wharf that includes short, medium and long term actions and allows for appropriate management of stormwater. Key features of the plan include:
  - The bulk liquids area has a bunded area and a spills tank to contain leaks or spillage.
  - The container storage areas and the north western part of the wharf does not have a stormwater collection or treatment system and therefore requires activities to minimise emissions and have enhanced cleaning.
  - The remainder of the wharf around the bulk minerals loading area, storage shed and the new refrigerated container area has a stormwater drainage system that was modified to divert stormwater to nearby Pond F.
  - Pond F overflows to Pond L, which can then be pumped into Pond E.
  - The Marine Supply Base diverts stormwater through a Gross Pollutant Trap (GPT), which removes sediments, hydrocarbons, debris and litter prior to discharge to the harbour.
  - Stormwater in the stockpile area passes through the series of ponds prior to entering Pond E and finally migrates through the pond wall to the harbour.
- Fort Hill Wharf was not designed with a stormwater collection system. Most activities conducted there are low risk to the stormwater, however measures are in place to avoid spills and residual emissions during bunkering and waste management activities.
- Implementation of appropriate spill cleanup procedures and plans.
- In addition to clean up of spills, implement procedures to ensure general clean ups are undertaken and that catchment areas are kept free of contaminants.
- Where land has been cleared and is no longer required, stabilisation of surface soils will be undertaken through methods such as rehabilitation.
- Monitor water for pollutants.
- Consider potential water contamination issues for proposed developments.
- Practice appropriate disposal of wastes.
- Clean up spills and residual emissions.
- Reporting all environmental impacts.
- Regular review of potable water use efficiency and implementation of water saving initiatives where practical.

- Regular review of the efficiency of water management measures to ensure implementation of continuous improvement.

## **5.10 Flora and Fauna**

### **5.10.1 Objectives**

To ensure that port operations do not have an adverse impact on native flora and fauna and to prevent the introduction or spread of exotic, declared noxious, and pest species, and to comply with relevant guidelines.

### **5.10.2 Management Strategies**

- Flora and fauna (native and pest species) will be managed in accordance with the requirements of the:
  - *Environmental Protection and Biodiversity Conservation Act.*
  - *Fisheries Act* and Fisheries Regulations - aquatic pests.
  - *Weeds Management Act 2001* and Regulations.
  - *National Environmental Protection (NT) Act.*
- Implementation of appropriate air quality, noise and vibration, land and soils and water management measures.
- Consider potential flora and fauna issues for proposed developments.
- Address flora and fauna issues in the aspects and impacts register and implement management actions.
- Conduct flora and fauna pest management (i.e., weed spraying program, feral animal trapping and general pest control).
- Maintain robust biosecurity and quarantine management in compliance with relevant legislation and approvals.
- Maintain adequate biosecurity infrastructure (i.e., wash bay, fumigation area and inspection area).
- Assist biosecurity agencies where required (i.e., marine pest monitoring).
- Comply with the Port Environment Protection Plan to minimise injury to marine fauna.
- Manage the East Arm Wharf Migratory Bird Protected area in accordance with the Environmental Protection and Biodiversity Conservation Act approval.

## **5.11 Hydrocarbons and Hazardous Materials**

### **5.11.1 Objectives**

To minimise the risk of a spill or emission of hydrocarbons (fuel, oils) or hazardous materials (dangerous goods, non-dangerous goods that are environmentally hazardous substances), and to comply with relevant guidelines.

### **5.11.2 Management Strategies**

- To comply with the requirements of the *Marine Pollution Act (NT)* and the *Waste Management and Pollution Control Act.*
- Spills of oil, other hydrocarbons, dangerous goods and other hazardous materials are to be reported (in accordance with Incident Reporting requirements) and cleaned up immediately.

- Risk of spills of oil, other hydrocarbons and hazardous materials are to be minimised to the maximum extent practicably.
- Ensure adequate oil spill response equipment and preparedness for the oil spill potential that exists for port operations.
- Marine oil spills are to be reported and managed in accordance with the Northern Territory Oil Spill Contingency Plan, which supports the National Marine Oil Spill Contingency Plan developed by the Commonwealth agency Australian Maritime Safety Authority (AMSA).
- Hydrocarbons, dangerous goods and other hazardous materials are to be stored in appropriately designed facilities, which are bunded or have secondary containment.
- Maintain and integrity test fuel pipelines and storage vessels in accordance with the maintenance schedule.
- Address hydrocarbons, dangerous goods and hazardous materials in the aspects and impacts register and implement management actions.
- Maintain safe vessel navigation to minimise the risk of marine oil spill incident.

## **5.12 Waste Management**

### **5.12.1 Objective**

To minimise the amount of waste produced and to ensure that all types of waste generated are managed in an environmentally responsible manner, and to comply with relevant guidelines.

### **5.12.2 Management Strategies**

- To comply with the requirements of the *Marine Pollution Act (NT)*, Workplace Health and Safety Regulations and the *Waste Management and Pollution Control Act*.
- Manage waste in accordance with the waste hierarchy of Avoidance, Reuse, Recycling, Recovery of Energy, Treatment, Containment and Disposal. Where feasible wastes such as paper, cardboard, plastics, glass, aluminium, lead acid batteries and scrap metal should be recycled. Recycling services can be located on [www.recyclingnearyou.com.au](http://www.recyclingnearyou.com.au).
- Ensure biosecurity waste from international vessels is managed in accordance with biosecurity requirements.
- Manage general waste to prevent litter, odour and pest infestations (i.e., provide accessible, enclosed waste bins and regularly remove wastes).
- Listed wastes are only to be handled and transported offsite for disposal by licensed waste companies.
- No waste (solid or liquid) is to be discharged to land or water except in accordance with the relevant approval or licence.
- Implementation of responsible handling and storage procedures for wastes such as waste oil until collected by a licensed waste transporter for removal and recycling.
- Implementation of appropriate management of the sewage treatment plant and discharge of treated sewage.
- Monitoring and reporting.
- Regular review of the efficiency of waste management measures to ensure implementation of continuous improvement.

## **5.13 Cargo Handling**

### **5.13.1 Objective**

The handling (import/export) of cargo is to be conducted to prevent spills, emissions and discharges that may adversely impact the environment.

### **5.13.2 Management Strategies**

- Handling of cargo to be conducted in accordance with this EMP, relevant individual Environment Management Plans, relevant operating procedures, legislative requirements, operating agreements, applicable guidelines and Darwin Port requirements.
- Loading and unloading infrastructure and equipment must be fit for purpose and properly maintained.
- Adequate monitoring and checks to be in place to detect spills, emissions and discharges.
- Appropriate control measures are implemented to minimise spills, emissions and discharges.
- Clean up throughout and at the conclusion of loading.
- Appropriate disposal of all residues and wastes.

## **5.14 Bunkering and other Liquid Transfers**

### **5.14.1 Objective**

The bunkering or otherwise refuelling of vessels is to be conducted to prevent fuel spills on the wharf and into the harbour.

### **5.14.2 Management Strategies**

- Bunkering and refuelling of vessels is to be conducted in accordance with this EMP, relevant individual Environment Management Plans, relevant operating procedures, legislative requirements, operating agreements, applicable guidelines and Darwin Port requirements.
- Only diesel fuel is available for supply (there is no heavy fuel oil available), bunkering can be conducted by fixed pipeline from the fuel terminal at East Arm Wharf, or by tanker truck or by fuel barge.
- Bunkering of vessels is managed and controlled by service providers with the relevant skills and experience. DP owns and maintains the wharf bunker fuel lines and valves. The fuel terminal supplies fuel to the bunker fuel lines and the delivery of fuel to the vessel is managed by a service provider specialising in this area.
- Bunkering and other liquid transfers are to be conducted in accordance with the bunkering and other liquid transfers International Safety Guide for Oil Tankers & Terminals (ISGOTT), Bunkering and Non Cargo Liquid Transfers at East Arm Wharf and Fort Hill Wharf Port Notice and Bunker Barge Service Port Notice.
- Adequate monitoring and checks to be in place to detect spills and leaks.

## **5.15 Dredging**

### **5.15.1 Objective**

Dredging as part of port operations is to be conducted in an environmentally responsible manner in accordance with relevant guidelines and permit conditions.



### **5.15.2 Management Strategies**

- Environmental management for dredging commences with the design of the program which takes into account the footprint to be dredged, type and volume of material to be dredged (rock, sediments), method of dredging (cutter suction, excavator, etc.), contaminants (including naturally occurring), the environmental, cultural and heritage significance of the area, hydrodynamic and dredge sediment modelling and the dredge material disposal.
- Dredging projects are to be developed in accordance with the Guidelines for the Environmental Assessment of Marine Dredging in the Northern Territory and the National Assessment Guidelines for Dredging 2009.
- Dredging proposals may be subject to a number of environmental assessment and approval processes including EPBC Act (Commonwealth) Referral, Environmental Impact Assessment, Waste Discharge License, Aboriginal Area Protection Authority certificate, Fisheries Act Permit and Development Permit. Proposals will be assessed and granted relevant approvals.
- Projects will then be implemented in accordance with approval conditions.

## 6. MANAGING RESIDUAL RISK

### 6.1 Emergency Preparedness, Response and Recovery

Some environmental incidents are significant enough to become an emergency and some emergency situations (that are not related to environmental incidents) have potential to result in environmental impacts. Personnel health and safety is the primary concern in all incidents. Emergencies (including those related to environmental aspects) at the port level are responded to in accordance with the DP Emergency and Crisis Management Plan (accessible at [www.darwinport.com.au](http://www.darwinport.com.au)).

Environmental related emergencies may include oil spills, fuel spills, chemical spills and other large pollution events, but can also include fauna deaths and pest incursions (land, marine). Emergencies that are significant enough to be on the Territory level which trigger a Northern Territory Government response are managed in accordance with the *Northern Territory All Hazards Emergency Management Arrangements*.

Significant marine oil spills trigger a Northern Territory Government response in accordance with the Northern Territory Oil Spill Contingency Plan. DP assists in the response and clean up as required.

The nature of the situations and substances that will be encountered in certain emergency events (i.e., spill events) will require personnel to be aware of potential hazards and risks.

All relevant documents need to incorporate an environmental component where an emergency situation may result in an environmental impact.

The relevant plans/manuals will:

- Detail requirements for co-ordination of resources to ensure effective control and clean-up after accident or emergency situations.
- Establish a framework to be used for the co-ordination of DP personnel, Government Departments and other appropriate organisations during and after an emergency situation.
- Direct personnel to emergency management plans for the management of site operations and the external environment from the effects of an emergency situation.
- Provide defined processes and accountabilities for DP's emergency response.
- Ensure the process incorporates periodic testing, review, revision and improvement of the specific response plans according to the training schedule.

### 6.2 Environmental Incident Reporting

An environmental incident includes any spill, emission, discharge, pest incursion or any other event that may have an adverse impact on the environment or cause a breach of environmental legislation. Incidents also include those that 'may threaten' to cause an adverse impact on the environment though are yet to have occurred.

Any person (DP staff and Port Users) who causes or becomes aware of an environmental incident that has occurred on or within DP facilities must report it immediately. Environmental Incident Report Forms are available from the DP webpage. Port users should also have their own incident procedures.

All people within the Northern Territory (including Darwin Harbour) are subject to the mandatory reporting requirements of Section 14 of the *Waste Management and Pollution Control Act*. Where

this applies reporting must be made to the Northern Territory Environment Protection Authority in accordance with this section. A 24 hr Pollution Hotline 1800 064 567 is available to make such reports.

DP must report environmental incidents in accordance with the *Ports Management Act* and the Ports Management Regulations (Part 5).

### **6.3 Incident Investigation**

Environmental Incidents shall be investigated to determine the facts of what occurred and to confirm that appropriate action has initially been taken to stop (leak, spill) and clean up the incident. Further investigation is to ensure the root causes of the incident are determined and appropriate actions are implemented to prevent a reoccurrence.

All accidents and emergency incidents will be reported and investigated within the Accident/Incident Reporting System.

Managers are responsible for ensuring that environmental incidents are reported to the Environmental Services. Managers are also responsible for documenting actions taken to prevent re-occurrence.

The CEO is accountable for assigning authority to employees responsible for ensuring that the appropriate authorities are informed of any emergency incidents in accordance with legislative requirements.

The General Manager Landside Operations is accountable for providing an investigation after any emergency response in order to assess:

- The work practices that caused the incident.
- Whether the cause can be eliminated or engineered out.
- Whether improved work practices will prevent recurrence.
- The need for improved preparation.

### **6.4 Environmental Incident Register**

DP will maintain an Environmental Incident Register to ensure that all environmental incidents are properly notified, investigated, documented, assessed and recorded and that preventative actions are implemented. The register can also be used to identify trends, to determine whether preventative actions have been successful and to determine what priorities need to be addressed.

Environmental incidents and complaints are to be managed in accordance with the DP Environmental Incident and Notification Procedures. These procedures provide definitions of environmental Incidents and identify notification, response and reporting requirements to ensure a comprehensive response is undertaken. Incidents are recorded in the DP Environmental Incident Register.

### **6.5 Corrective Action for Non-Conformances**

Environmental non-conformances can arise from incidents/accidents, monitoring, technical audits, and deviations from the policy and objectives and targets.

Corrective action to re-establish compliance should be taken as soon as possible. The steps to corrective action will usually involve:

- Review of the technical and system audit reports by the appropriate General Manager in consultation with the Environmental Manager.

- An investigation to identify and analyse the root cause of the technical non-conformance if it results in an emergency response.
- Development of objectives, targets and resource plans to correct or prevent the non-conformance.

The solution may involve remedial actions and:

- Changes to this EMP, standard operating procedures (SOPs), emergency response plan and other EMS documentation.
- Identification and implementation of specific training.

Environmental Services is responsible for reviewing Incident/Accident reports, audit reports and appropriate documents and reporting on non-conformances and corrective/preventative actions to the CEO. The relevant General Manager is responsible for preparing objectives and targets for non-conformances assigned to their Department. The Environmental Manager is accountable for ensuring that required actions are identified and solutions are effectively implemented.

## **7. REVIEW AND REVISION**

### **7.1 Darwin Port Environmental Monitoring**

DP shall undertake an environmental sampling and analysis program to monitor the environmental performance of DP against its objectives and management strategies. Early detection of emerging issues will enable actions to be implemented and environmental impact to be avoided or minimised. Environmental aspects that may be monitored for physical, chemical or biological properties include:

- Sea water.
- Stormwater.
- Groundwater.
- Soil.
- Marine sediment.
- Noise.
- Air quality.
- Fauna and flora.
- Trade waste / sewage.
- Energy consumption / greenhouse emissions.

### **7.2 Port User Environmental Monitoring**

Port users who conduct activities that may have an impact on the environment should conduct their own sampling and analysis program to monitor their risks.

### **7.3 Auditing**

Auditing of this EMP will be undertaken annually.

Audits will be undertaken to ensure:

- Compliance with ISO 14001.
- Compliance with the EMP.
- New issues are covered within the EMP.

All actions identified during the auditing process must be addressed in a timely manner. These addressed actions must then be reviewed to ensure effective implementation before being 'closed out'. Additionally reports to the Northern Territory Government will be made based on audit findings in accordance with the Port Operating Deed:

The Port Manager must provide a report to the Northern Territory Government within 30 days after 30 June 2016 and within 30 days after each anniversary of 30 June 2016 describing the Port Manager and Port Lessee's compliance with the Environmental Management Plan; and the extent (if any) to which Port Manager or Port Lessee has failed to comply with the Environmental Management Plan and how any non-compliances have been or are proposed to be addressed.

### **7.4 EMP Certification**

As a requirement of the Port Operating Deed, this EMP requires certification in 2016 and then again on or prior to 30 June 2020; and at least every five years after 30 June 2020.

### **7.5 Recording**

All records associated with environmental management with DP are to be maintained in a manner that ensures they are:

- In a suitably marked or identified locations so as to be readily retrievable.
- Correctly stored (i.e., electronically in the records management system).
- All electronic records are to be backed up in accordance with DP Information Technology (IT) policies.

## **8. DOCUMENT CONTROL AND AVAILABILITY**

### **8.1 Document Control**

Control of any documents associated with this EMP will be maintained by having a single electronic copy. Where there is more than one revision of a document, the most current revision will be the controlled electronic copy. Documents will be reviewed as required or where otherwise stipulated.

All hard copy documents are considered to be uncontrolled and users of uncontrolled documents are accountable for ensuring that they are using the current revision.

All employees will have 'read only' access to relevant EMS documentation on the internet. The Environmental Manager (and Corporate Services Manager) will have full access to all relevant documentation and document registers for maintenance and updating purposes.

### **8.2 Publication and Availability**

The Environmental Manager is responsible for ensuring that the latest version of this EMP documentation is made available to all relevant personnel. Document recipients are responsible for ensuring that the hard copy they have is the latest version.

Electronic versions of this EMP will be stored in the DP's electronic document management system where version control is actively managed.

The latest version of this EMP is also to be made public on the DP's internet site – [www.darwinport.com.au](http://www.darwinport.com.au).

## 9. ABBREVIATIONS AND GLOSSARY

### Units and Symbols

%	Percent
°C	Degrees celsius
ha	Hectare
km	Kilometre
km <sup>2</sup>	Square kilometre
m	Metre
mm	Millimetre

### Abbreviations

AAQ NEPM	National Environment Protection (ambient air quality) Measure
AMSA	Australian Marine Safety Authority
AQIS	Australian Quarantine and Inspection Service
CAMBA	China Australia Migratory Bird Agreement
Coffey	Coffey Environments Pty Ltd
Customs	Australian Customs and Border Protection Service
DHAC	Darwin Harbour Advisory Committee
DP	Darwin Port Operations
EAW	East Arm Wharf
EMP	Environmental Management Plan
EMS	Environmental Management System
EPBC Act	Environmental Protection and Biodiversity Conservation Act
JAMBA	Japan Australia Migratory Bird Agreement
MARPOL	Marine Pollution (the International Convention for the Prevention of Pollution from Ships)
NEPM	National Environment Protection Measure
NTES	Northern Territory Emergency Services
NTFRS	Northern Territory Fire and Rescue Service
OH&S	Occupational Health and Safety
SOP	Standard Operating Procedure
WW II	World War 2



## Words

### A

**Aboriginal:** Of or pertaining to members of the Indigenous people of Australia.

**Audit:** An official examination and verification of accounts and records.

### B

**Bund:** An embankment constructed around an area to prevent the inflow or outflow of liquids.

### C

**Cargo:** The goods carried on a ship.

**Catchment:** The entire land area from which water (e.g., rainfall) drains to a specific water course or waterbody.

**Causeway:** A raised road or path, as across low or wet ground.

**Contaminate:** To render impure by contact or mixture.

**Contractor:** Someone who performs work at a certain price or rate.

**Cultural heritage:** The cultural history of a region or of a people; the engagement of people with their customary practices (particularly through specific sites) in the past and in the present.

### D

**Disturbed ground:** An area of ground that has been disturbed by construction or operations activities for the project.

### E

**Emission:** A discharge of a substance (e.g., dust) into the environment.

### F

### G

**Groundwater:** Water naturally stored beneath the surface of the earth, which saturates the pores and fractures of sand, gravel and rock formations.

### H

**Hardstand:** An area of ground levelled, compacted and possibly sealed to enable it to support vehicles and heavy machinery.

**Hazard:** An agent or situation capable of potentially injuring or compromising the health and safety of a person or causing damage to plant or premises.

**Hydrocarbon:** Any of a class of compounds containing only hydrogen and carbon, such as methane, petroleum and oils.

### I

**Incident:** An event on site that has the potential to cause an adverse effect on:

- The safety or health of a person.
- The environment.
- The plant or equipment.

**Indigenous:** Persons of Australian Aboriginal and Torres Strait Islander origin.

**J**

**K**

**L**

**Legislation:** A law or a body of laws enacted.

**M**

**Monitoring:** Systematic sampling and, if appropriate, sample analysis to record changes over time caused by impacts associated with operations.

**N**

**O**

**P**

**Particulate matter:** Material 10 microns or less in size and capable of being breathed deep into the lungs, the amount of particulate matter in the air is used as an indicator of health risk.

**Q**

**Quarantine:** A system of measures maintained by public authority at ports for preventing the spread of disease.

**R**

**Rehabilitation:** The measures taken to stabilise disturbed land, such as recontouring, drainage and topsoil resspreading.

**Risk:** Exposure to the chance of injury or loss.

**Runoff:** That portion of precipitation (rain, hail and snow) that flows from a specific area as water.

**S**

**Stakeholder:** Someone who has a pecuniary interest in an enterprise.

**Stevedore:** A firm or individual engaged in the loading or unloading of a vessel.

**Stockpile:** A pile used to store material (such as low-grade ore) for future use.

**Stormwater:** A sudden, excessive run-off of water following a storm.

**Surface Water:** All water flowing over, or contained on, a landscape (e.g., runoff, streams, lakes).

**Sustainable:** Able to be sustained.

**T**

**Tenant:** Someone who holds land for the owner for a period of time, as a lessee or occupant for rent.

**Terrestrial:** Of or relating to the land, as distinguished from the water.

**U**

**V**

**W**

X  
Y  
Z

## 10. REFERENCES AND BIBLIOGRAPHY

- Acer Vaughan. 1993. Draft Environmental Impact Statement; Darwin Port Expansion – East Arm. Prepared for Northern Territory Department of Transport and Works.
- AECOM. 2009. Notice of Intent for the Proposed Expansion Works at East Arm. Prepared for Department of Planning and Infrastructure, Darwin.
- ANZECC. 1997. Working together to reduce impacts from shipping operations: ANZECC Strategy to protect the marine environment. Code of Practice for Antifouling and In-water Hull Cleaning and Maintenance. Prepared by the ANZECC Maritime Accidents and Pollution Implementation Group with the help of consultants Schammell, M and Baker, R.
- ANZECC/ARMCANZ 2000. Australian and New Zealand Guidelines for Fresh and Marine Water Quality. Prepared by the Australian and New Zealand Environment and Conservation Council and Agriculture and Resource Management Council of Australia and New Zealand.
- Coffey Environments. 2010. Draft Environmental Management System Procedures. Procedures 1 – 12 prepared for the Darwin Port Corporation.
- Coffey Environments. 2010. Draft Terms of Reference for Health, Safety and Environment Committee, Darwin Port Corporation. Prepared for the Darwin Port Corporation.
- Coffey Environments. 2010. Draft Environmental Policy, Darwin Port Corporation. Prepared for the Darwin Port Corporation.
- DHF. 2005. Guidelines for Preventing Mosquito Breeding Associated with Construction Practice Near Tidal Areas in the NT. Medical Entomology Centre for Disease Control, Department of Health and Families, Darwin NT. First printed June 1988, Updated August 2002 and August 2005.
- DHAC. 2003. Darwin Harbour Regional Plan of Management. Prepared by the Darwin Harbour Advisory Committee. Published by the Department of Infrastructure, Planning and Environment, Northern Territory. November.
- DHAC. 2010. Darwin Harbour Strategy: A comprehensive guide for the responsible stewardship and sustainable development of the Darwin Harbour region. Darwin Harbour Advisory Committee.
- DNRETAS. 2010. Water Quality Objectives for the Darwin Harbour Region – Background Document. Prepared by the Department of Natural Resources, The Arts and Sport, Aquatic Health Unit, Northern Territory. February.
- DPC. 2003. Draft Environmental Management System Manual, Darwin Port Corporation.
- DPC. 2009. Darwin Port Corporation Annual Report, 2008/2009.
- DPC. 2010. East Arm Wharf Facilities, Masterplan 2030: Land Use Strategy. Darwin Port Corporation.
- DPC. 2010. Draft Environmental Management Standard. Darwin Port Corporation.
- ISO. 2004. ISO14001:2004 Environmental Management System – Requirements with guidance for use. International Organisation of Standards.
- LPE. 2001. National Environment Protection Measure for Ambient Air Quality: Monitoring Plan for the Northern Territory. Prepared by the Lands, Planning and Environment, Northern Territory Government. May.

Minter Ellison. 2010. Darwin Port Corporation Environmental Management System Legal Register. Draft. December.

NT Government. 2000. The Northern Territory Government Gazette No. G19, 17 May. pp3.

TOPROC. 1999. Policy on the Protection of Darwin Harbour and its Coastline. Prepared by the Top End Regional Organisation of Councils, Darwin, Northern Territory.