

INPEX ILNG & ILPG PASSAGE INFORMATION INWARDS

NAME OF VESSEL: _____ **DATE:** _____
POB TIME: _____ **GT:** _____
BERTH ILPG / ILNG **LOA:** _____ **DRAUGHT F:** _____
PORT SIDE ALONGSIDE **DRAUGHT A:** _____

DRAUGHTS & UKC

	DWR	Swing Basin
Min. Depth	13.1m	12.6 m
Tide @ -----		
Total Depth		
Max Draught		
Static UKC		
Min Req'd UKC	2.0 m	1.5 m
Comply UKC	Yes / No	Yes / No

TIDE HEIGHTS

Tide @		CPP
Tide @		
Tide @		
Tide @		DARWIN HARBOUR
Tide @		
Tide @		
Tide @		
Tide @		

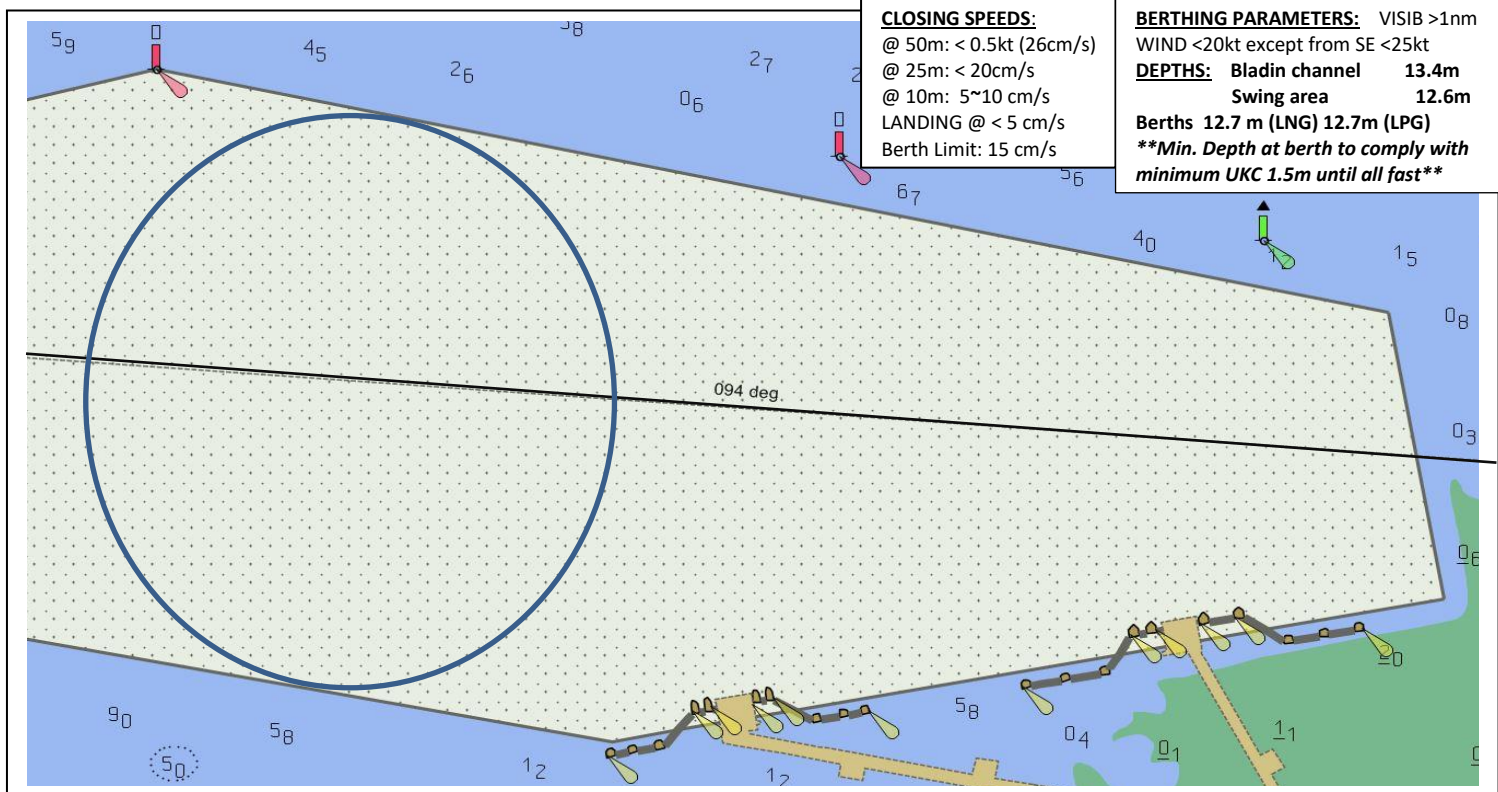
DARWIN HW/LW

	TIME	HEIGHT
HW/LW		
HW/LW		
HW/LW		

VHF CHANNELS

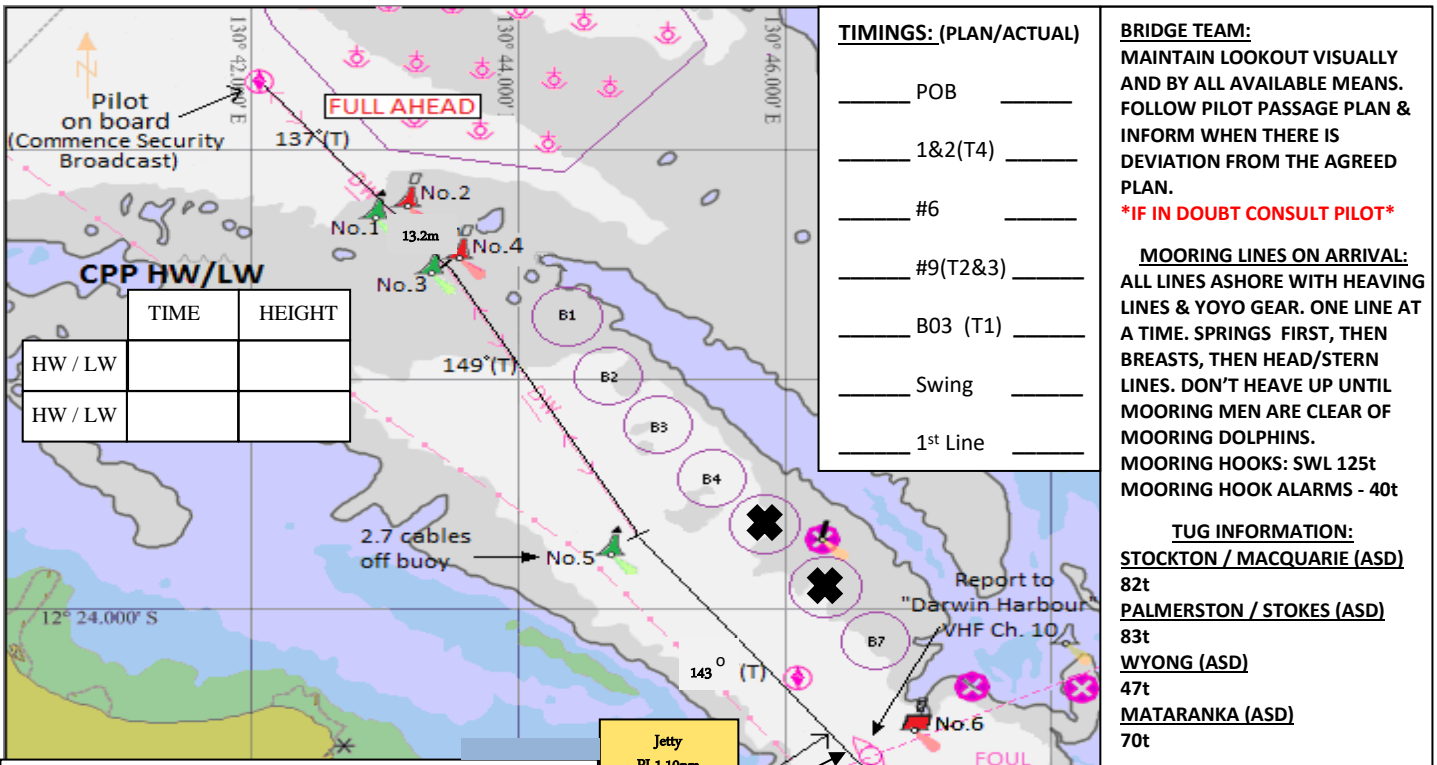
Darwin Harbour	Ch 10
ILNG Berth & Tugs	Ch 88

Mooring tool box meeting held
 Gyro Compass Error: _____ **High/Low**
 Hand Steering tested **NFU Steering tested**
 Pilot Card completed **Anchors Ready**
Bow Thruster: Y N **HP/KW**
 Main Engine tested ahead/astern
ANY condition or defect that the pilot should be made aware of Y N



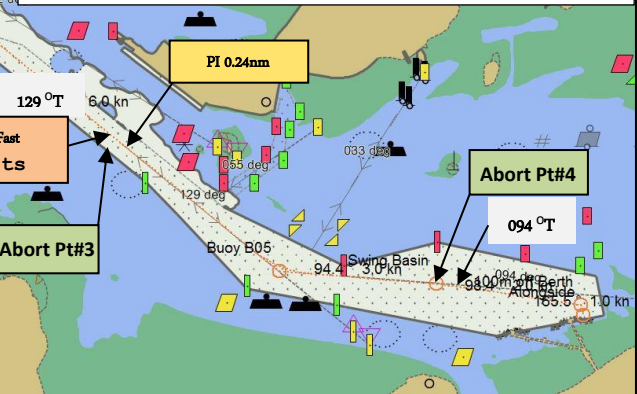
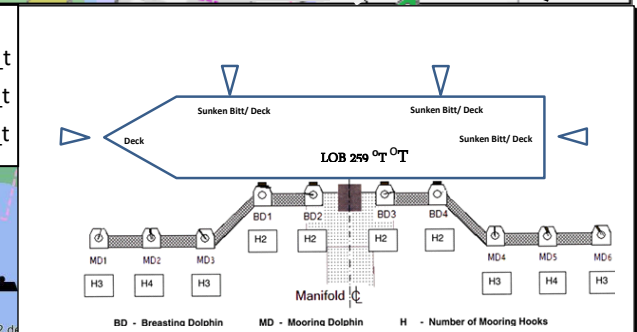
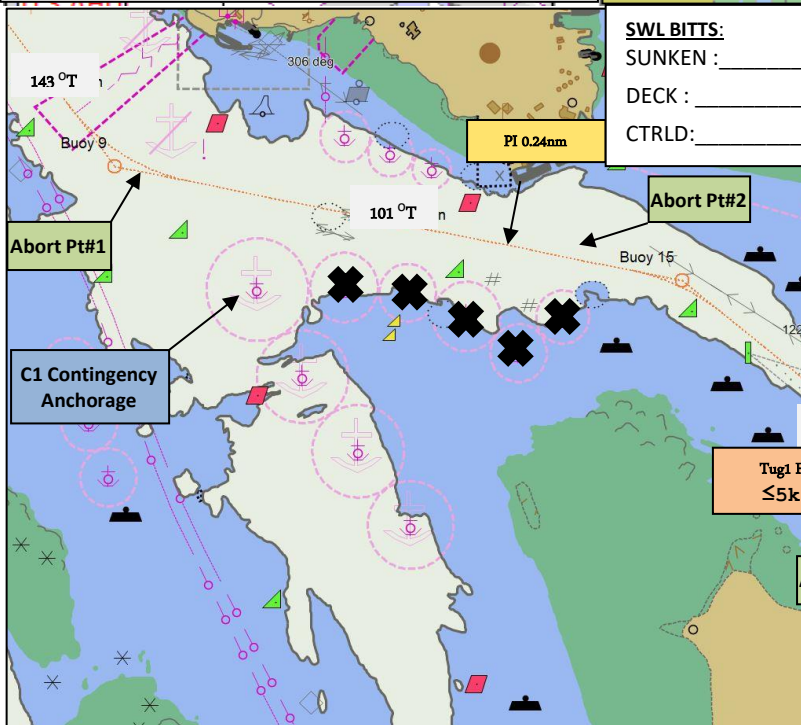
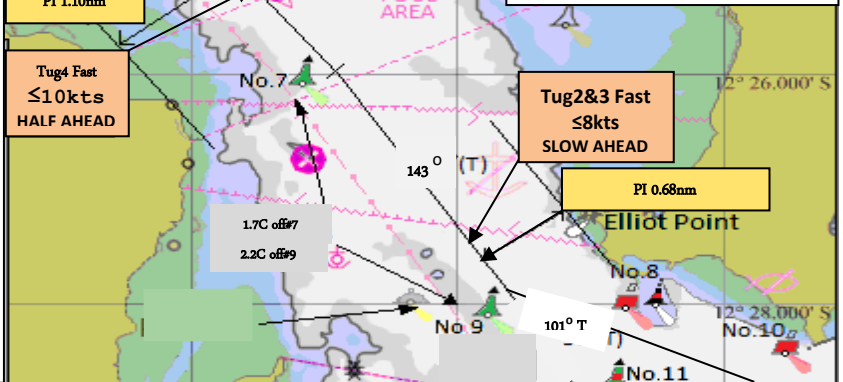
THE PRINCIPLES OF BRIDGE RESOURCE MANAGEMENT MUST BE ADHERED TO AT ALL TIMES

MASTER: _____ **SIGNATURE:** _____
PILOT: _____ **SIGNATURE:** _____



NOTE:

- CHARTS NOT TO SCALE AND ONLY USED FOR THE MASTER/ PILOT EXCHANGE. NAVIGATIONAL CHARTS AND/OR APPROVED ECDIS SHOULD BE REFERRED TO IN ALL CASES.
- INDICATED COURSES ARE A GUIDELINE ONLY. VESSEL'S ROUTE IS TO BE DISCUSSED DURING THE MASTER/PILOT EXCHANGE AND AGREED TO BY THE MASTER.
- **THE BRIDGE TEAM MUST IMMEDIATELY MAKE THE PILOT AWARE OF ANY CONCERNS OR ANYTHING NOT UNDERSTOOD**



DARWIN PILOT PASSAGE PLAN (ILNG BERTH INWARD)

Route: Outer Pilot Boarding Ground to INPEX ILNG (Inward) / Total distance 17.5nm

Waypoint Name	Latitude	Longitude	Course & Distance	DTG	Comment
1 OPBG	12° 19.561' S	130° 42.042' E	137° x 2.11nm	17.47nm	Speed 12kts
2 Buoys 3&4	12° 21.108' S	130° 43.518' E	149° x 2.64nm	15.36 nm	Speed 12kts
3 Buoy 5	12° 23.377' S	130° 44.908' E	142° x 1.57nm	12.72 nm	Speed 12kts
4 IPBG / Buoy 6 TUGS 1,2,3,4 rendezvous	12° 24.616' S	130° 45.907' E	143° x 4.59nm	11.15 nm	Speed 10kts PI 143 ° x 1.11' off Mandorah Jetty PI 143 ° x 0.68' off Emery Pt
5 Buoy 9	12° 28.279' S	130° 48.752' E	101° x 2.73nm	6.56 nm	Speed 8 kts Pass 0.6nm off Elliott Point PI 101 ° x 0.24' off FHW Dolphin
6 Buoy 15	12° 28.816' S	130° 51.486' E	129° x 2.27nm	3.83 nm	Speed 6 kts PI 129 ° x 0.37' off EAW
7 Buoy B05	12° 30.246' S	130° 53.295' E	108° x 0.41nm	1.56 nm	Speed 4kts PI 094 ° x 0.54nm off Old Man Rock
8 Buoy B04 (Turn)	12° 30.376' S	130° 53.694' E	094° x 0.46nm	1.15 nm	Exit turn just south of 094° leads
9 Buoy B06 – Swing Basin 700m width	12° 30.410' S	130° 54.160' E	094° x 0.62nm	0.69 nm	Speed astern < 2kts / Swing and come astern on PI 094 ° x 0.161' off ILPG berth
10 130m off ILNG berth	12° 30.454' S	130° 54.791' E	180° x 0.07nm	0.07 nm	Speed <0.5kt reducing to Doppler limits
11 Alongside ILNG berth	12° 30.532' S	130° 54.859' E	//	0 nm	Berth heading 079 ° /259 ° Port side to (head out) berthing

DARWIN PILOT PASSAGE PLAN (ILPG BERTH INWARD)

Route: Outer Pilot Boarding Ground to INPEX ILPG (Inward) / Total distance 17.2nm

Waypoint Name	Latitude	Longitude	Course & Distance	DTG	Comment
1 OPBG	12° 19.561' S	130° 42.042' E	137° x 2.11nm	17.2nm	Speed 12kts
2 Buoys 3&4	12° 21.108' S	130° 43.518' E	149° x 2.64nm	15.36 nm	Speed 12kts
3 Buoy 5	12° 23.377' S	130° 44.908' E	142° x 1.57nm	12.72 nm	Speed 12kts
4 IPBG / Buoy 6 TUGS 1,2,3 rendezvous	12° 24.616' S	130° 45.907' E	143° x 4.59nm	11.15 nm	Speed 10kts PI 143 ° x 1.11' off Mandorah Jetty PI 143 ° x 0.68' off Emery Pt
5 Buoy 9	12° 28.279' S	130° 48.752' E	101° x 2.73nm	6.56 nm	Speed 8 kts Pass 0.6nm off Elliott Point PI 101 ° x 0.24' off FHW Dolphin
6 Buoy 15	12° 28.816' S	130° 51.486' E	129° x 2.27nm	3.83 nm	Speed 6 kts PI 129 ° x 0.37' off EAW
7 Buoy B05	12° 30.246' S	130° 53.295' E	108° x 0.41nm	1.56 nm	Speed 4kts PI 094 ° x 0.54nm off Old Man Rock
8 Buoy B04 (Turn)	12° 30.376' S	130° 53.694' E	094° x 0.46nm	1.15 nm	Exit turn just south of 094° leads
9 Buoy B06 – Swing Basin 700m width	12° 30.410' S	130° 54.160' E	107° x 0.35nm	0.35 nm	Speed astern < 2kts / Swing and come astern on PI 094 ° x 0.161' off ILPG berth
10 130m off ILPG berth	12° 30.510' S	130° 54.501' E	169° x 0.07nm	0.07 nm	Speed <0.5kt reducing to Doppler speed limits displayed on passplan
11 Alongside ILPG berth	12° 30.579' S	130° 54.515' E	//	0 nm	Berth heading 079 ° /259 ° Port side to (head out) berthing