

# INPEX ILNG & ILPG PASSAGE INFORMATION INWARDS

**NAME OF VESSEL:** \_\_\_\_\_ **DATE:** \_\_\_\_\_  
**POB TIME:** \_\_\_\_\_ **GT:** \_\_\_\_\_  
**BERTH** ILPG / ILNG **LOA:** \_\_\_\_\_ **DRAUGHT F:** \_\_\_\_\_  
*PORT SIDE ALONGSIDE* **DRAUGHT A:** \_\_\_\_\_

### DRAUGHTS & UKC

	DWR	Swing Basin/Berth
Min. Depth	13.3 m	12. m
Tide @ -----		
Total Depth		
Max Draught		
Static UKC		
Min Req'd UKC	2.0 m	1.5 m
Comply UKC	Yes / No	Yes / No

### TIDE HEIGHTS

Tide @		
Tide @		CPP
Tide @		
Tide @		
Tide @		DARWIN HARBOUR
Tide @		
Tide @		
Tide @		
Tide @		

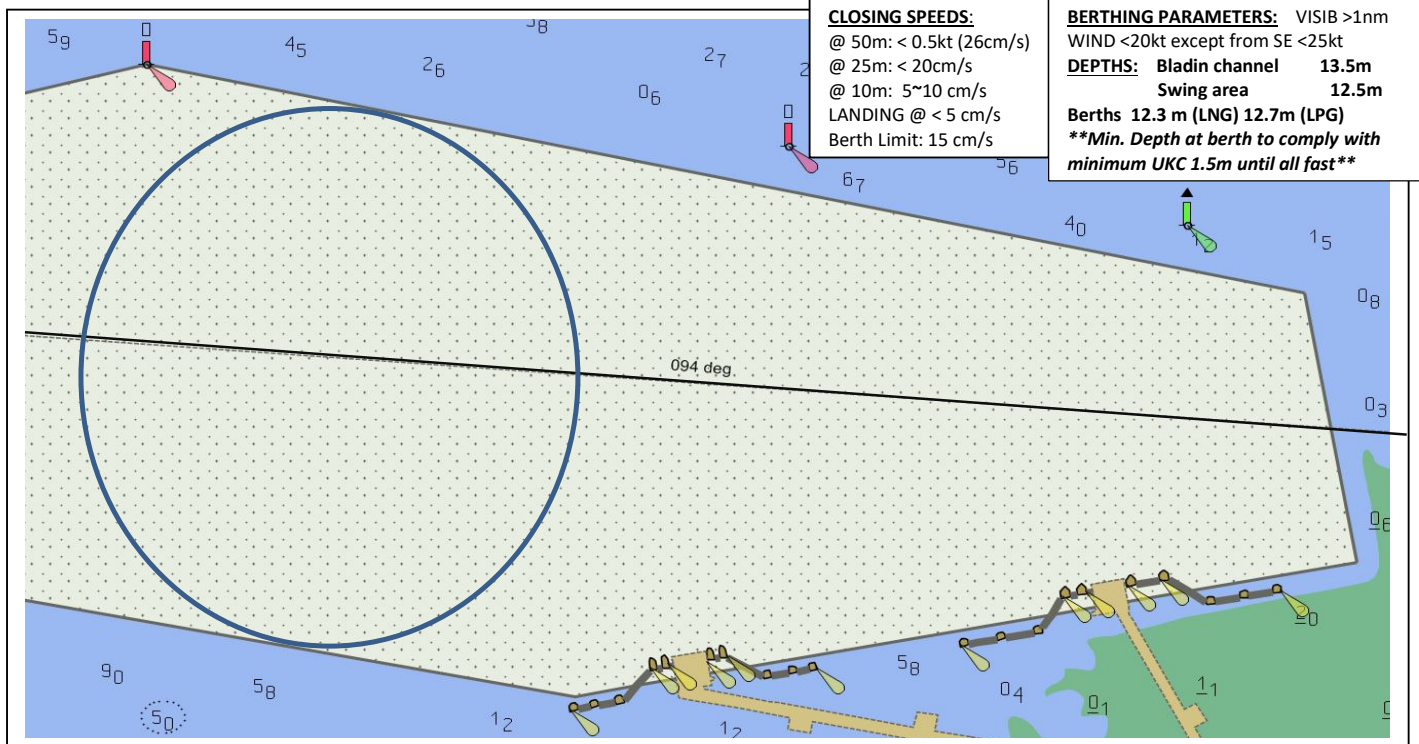
### DARWIN HW/LW

	TIME	HEIGHT
HW/LW		
HW/LW		
HW/LW		

### VHF CHANNELS

Darwin Harbour	Ch 10
ILNG Berth & Tugs	Ch 88

**Mooring tool box meeting held**  
 **Gyro Compass Error:** \_\_\_\_\_ **High/Low**  
 **Hand Steering tested**       **NFU Steering tested**  
 **Pilot Card completed**       **Anchors Ready**  
**Bow Thruster:**  Y  N       **HP/KW**  
 **Main Engine tested ahead/astern**  
**ANY condition or defect that the pilot should be made aware of**       Y  N



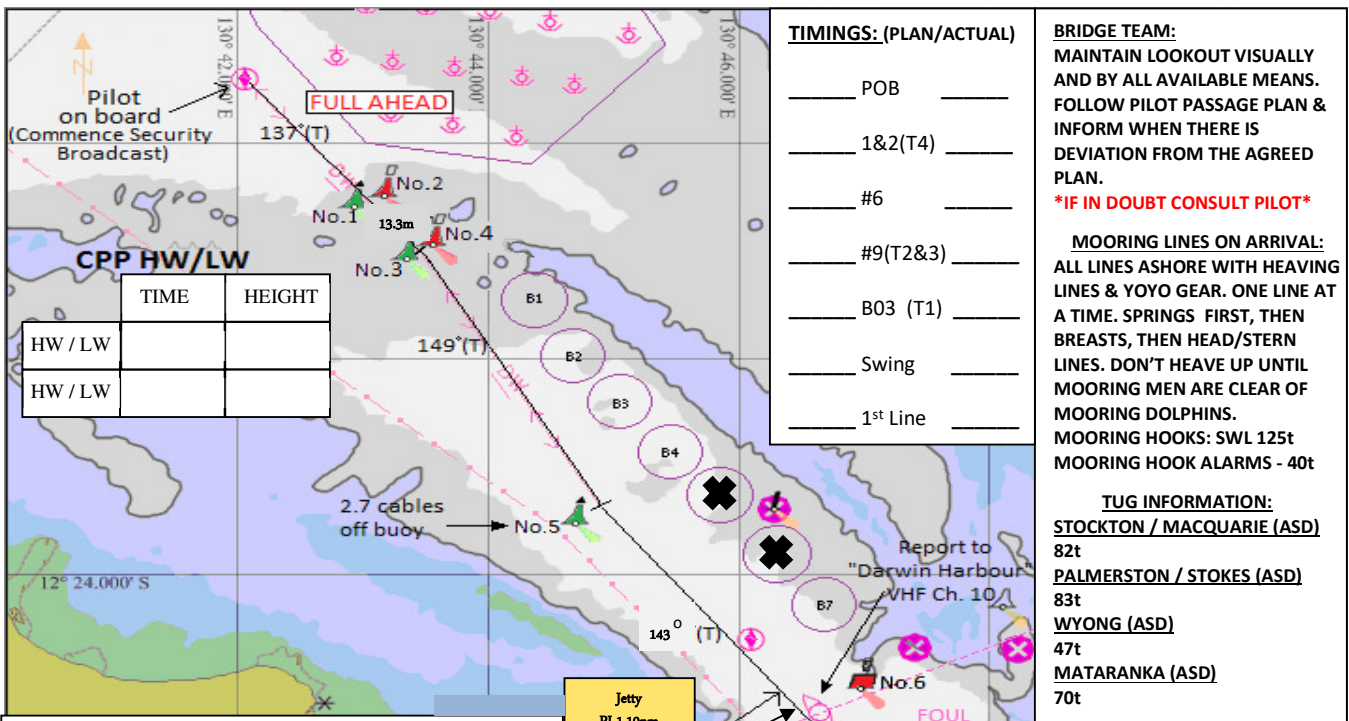
THE PRINCIPLES OF BRIDGE RESOURCE MANAGEMENT MUST BE ADHERED TO AT ALL TIMES

MASTER: \_\_\_\_\_

SIGNATURE: \_\_\_\_\_

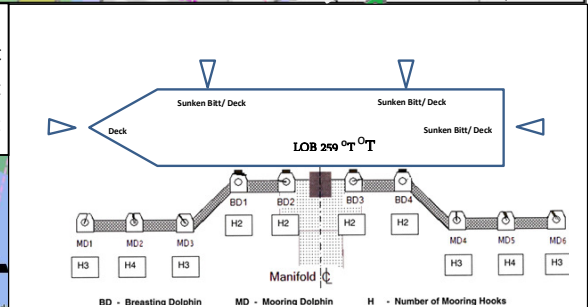
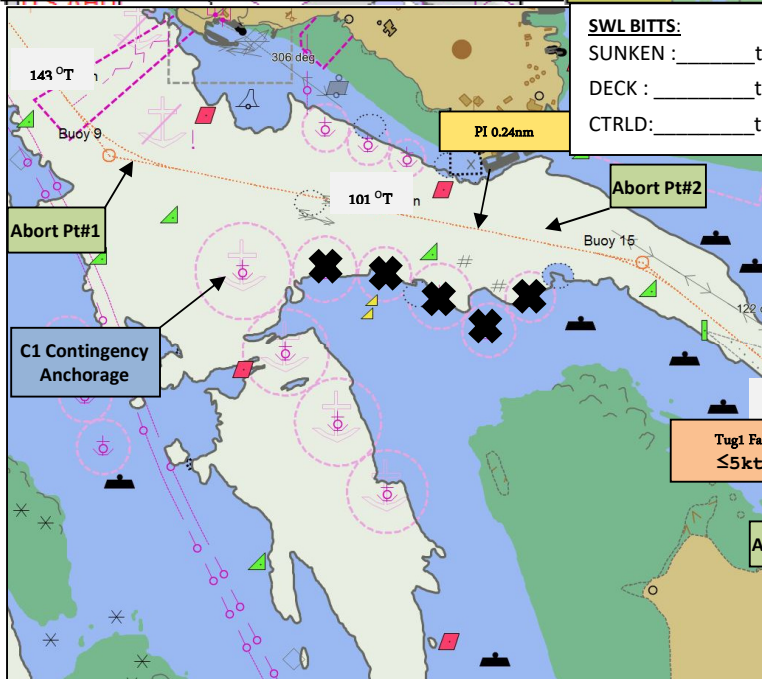
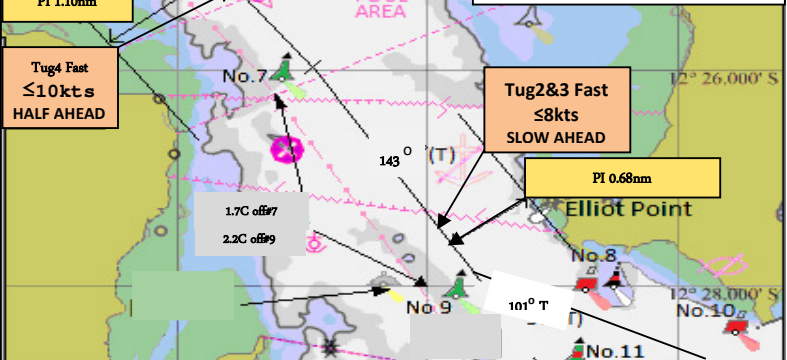
PILOT: \_\_\_\_\_

SIGNATURE: \_\_\_\_\_



**NOTE:**

- CHARTS NOT TO SCALE AND ONLY USED FOR THE MASTER/ PILOT EXCHANGE. NAVIGATIONAL CHARTS AND/OR APPROVED ECDIS SHOULD BE REFERRED TO IN ALL CASES.
- INDICATED COURSES ARE A GUIDELINE ONLY. VESSEL'S ROUTE IS TO BE DISCUSSED DURING THE MASTER/PILOT EXCHANGE AND AGREED TO BY THE MASTER.
- **THE BRIDGE TEAM MUST IMMEDIATELY MAKE THE PILOT AWARE OF ANY CONCERNS OR ANYTHING NOT UNDERSTOOD**



## **DARWIN PILOT PASSAGE PLAN (ILNG BERTH INWARD)**

**Route: Outer Pilot Boarding Ground to INPEX ILNG (Inward) / Total distance 17.5nm**

	<b>Waypoint Name</b>	<b>Latitude</b>	<b>Longitude</b>	<b>Course &amp; Distance</b>	<b>DTG</b>	<b>Comment</b>
<b>1</b>	<b>OPBG</b>	12° 19.561' S	130° 42.042' E	137° x 2.11nm	17.47nm	Speed 12kts
<b>2</b>	<b>Buoys 3&amp;4</b>	12° 21.108' S	130° 43.518' E	149° x 2.64nm	15.36 nm	Speed 12kts
<b>3</b>	<b>Buoy 5</b>	12° 23.377' S	130° 44.908' E	142° x 1.57nm	12.72 nm	Speed 12kts
<b>4</b>	<b>IPBG / Buoy 6 TUGS 1,2,3,4 rendezvous</b>	12° 24.616' S	130° 45.907' E	143° x 4.59nm	11.15 nm	Speed 10kts PI 143 ° x 1.11' off Mandorah Jetty PI 143 ° x 0.68' off Emery Pt
<b>5</b>	<b>Buoy 9</b>	12° 28.279' S	130° 48.752' E	101° x 2.73nm	6.56 nm	Speed 8 kts Pass 0.6nm off Elliott Point PI 101 ° x 0.24' off FHW Dolphin
<b>6</b>	<b>Buoy 15</b>	12° 28.816' S	130° 51.486' E	129° x 2.27nm	3.83 nm	Speed 6 kts PI 129 ° x 0.37' off EAW
<b>7</b>	<b>Buoy B05</b>	12° 30.246' S	130° 53.295' E	108° x 0.41nm	1.56 nm	Speed 4kts PI 094 ° x 0.54nm off Old Man Rock
<b>8</b>	<b>Buoy B04 (Turn)</b>	12° 30.376' S	130° 53.694' E	094° x 0.46nm	1.15 nm	Exit turn just south of 094° leads
<b>9</b>	<b>Buoy B06 – Swing Basin 700m width</b>	12° 30.410' S	130° 54.160' E	094° x 0.62nm	0.69 nm	Speed astern < 2kts / Swing and come astern on PI 094 ° x 0.161' off ILPG berth
<b>10</b>	<b>130m off ILNG berth</b>	12° 30.454' S	130° 54.791' E	180° x 0.07nm	0.07 nm	Speed <0.5kt reducing to Doppler limits
<b>11</b>	<b>Alongside ILNG berth</b>	12° 30.532' S	130° 54.859' E	//	0 nm	Berth heading 079 ° /259 ° Port side to (head out) berthing

## **DARWIN PILOT PASSAGE PLAN (ILPG BERTH INWARD)**

**Route: Outer Pilot Boarding Ground to INPEX ILPG (Inward) / Total distance 17.2nm**

	<b>Waypoint Name</b>	<b>Latitude</b>	<b>Longitude</b>	<b>Course &amp; Distance</b>	<b>DTG</b>	<b>Comment</b>
<b>1</b>	<b>OPBG</b>	12° 19.561' S	130° 42.042' E	137° x 2.11nm	17.2nm	Speed 12kts
<b>2</b>	<b>Buoys 3&amp;4</b>	12° 21.108' S	130° 43.518' E	149° x 2.64nm	15.36 nm	Speed 12kts
<b>3</b>	<b>Buoy 5</b>	12° 23.377' S	130° 44.908' E	142° x 1.57nm	12.72 nm	Speed 12kts
<b>4</b>	<b>IPBG / Buoy 6 TUGS 1,2,3 rendezvous</b>	12° 24.616' S	130° 45.907' E	143° x 4.59nm	11.15 nm	Speed 10kts PI 143 ° x 1.11' off Mandorah Jetty PI 143 ° x 0.68' off Emery Pt
<b>5</b>	<b>Buoy 9</b>	12° 28.279' S	130° 48.752' E	101° x 2.73nm	6.56 nm	Speed 8 kts Pass 0.6nm off Elliott Point PI 101 ° x 0.24' off FHW Dolphin
<b>6</b>	<b>Buoy 15</b>	12° 28.816' S	130° 51.486' E	129° x 2.27nm	3.83 nm	Speed 6 kts PI 129 ° x 0.37' off EAW
<b>7</b>	<b>Buoy B05</b>	12° 30.246' S	130° 53.295' E	108° x 0.41nm	1.56 nm	Speed 4kts PI 094 ° x 0.54nm off Old Man Rock
<b>8</b>	<b>Buoy B04 (Turn)</b>	12° 30.376' S	130° 53.694' E	094° x 0.46nm	1.15 nm	Exit turn just south of 094° leads
<b>9</b>	<b>Buoy B06 – Swing Basin 700m width</b>	12° 30.410' S	130° 54.160' E	107° x 0.35nm	0.35 nm	Speed astern < 2kts / Swing and come astern on PI 094 ° x 0.161' off ILPG berth
<b>10</b>	<b>130m off ILPG berth</b>	12° 30.510' S	130° 54.501' E	169° x 0.07nm	0.07 nm	Speed <0.5kt reducing to Doppler speed limits displayed on passplan
<b>11</b>	<b>Alongside ILPG berth</b>	12° 30.579' S	130° 54.515' E	//	0 nm	Berth heading 079 ° /259 ° Port side to (head out) berthing